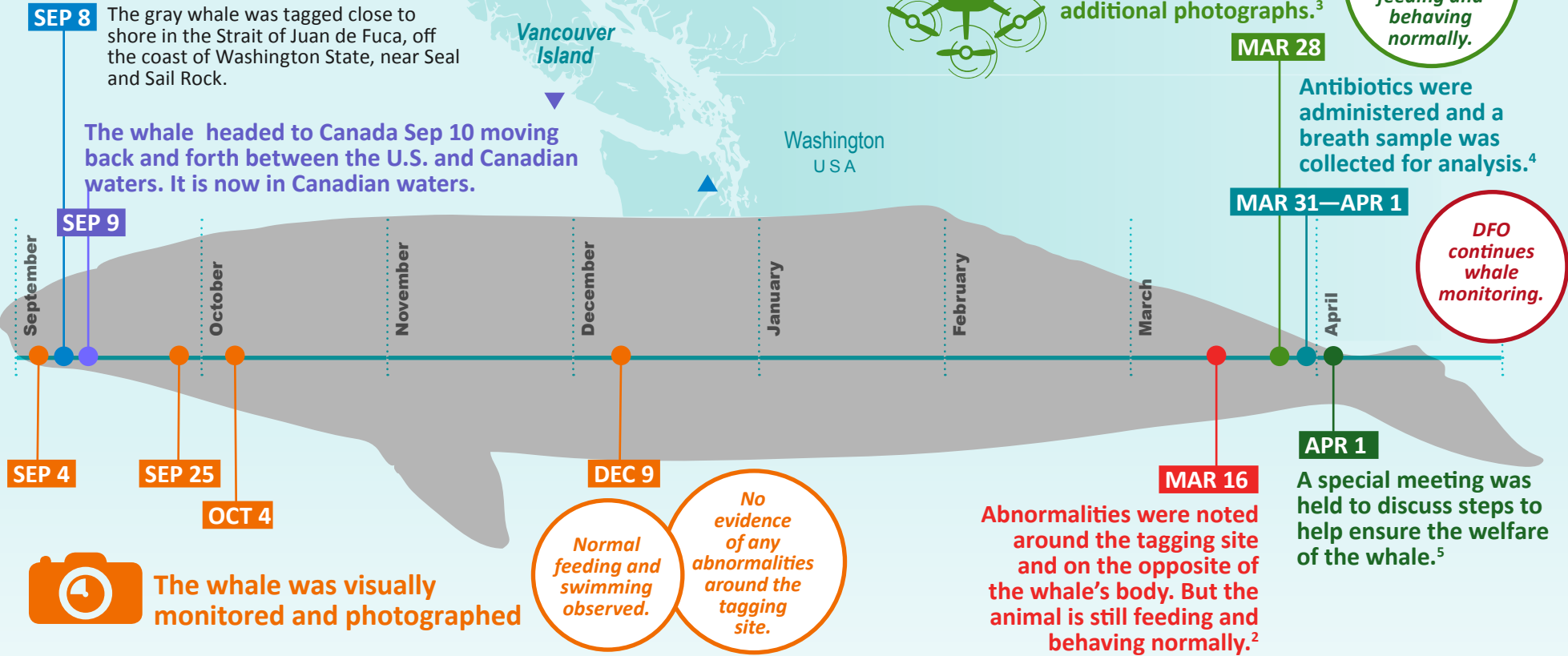


NOAA Fisheries tagged a gray whale to study its movements and habitat use.¹



¹ Our standard practice before and after tagging individual animals is to closely monitor their movements and health condition in accordance with NOAA Fisheries permitting requirements, U.S. laws, and international best practices to ensure the welfare of the animal and the safety of the researchers.

² A researcher contracted by NOAA Fisheries working in concert with the Department of Fisheries and Oceans (DFO) Canada, sighted and photographed the whale in Barkley Sound, Canada. Photographs were sent to experts in veterinary medicine for evaluation.

³ Survey conducted by the Department of Fisheries and Oceans and Vancouver Aquarium/Ocean Wise.

⁴ Vancouver Aquarium/Ocean Wise and DFO successfully administered antibiotics as a precaution and collected a breath sample for further analysis to try to identify type of infection.

⁵ NOAA Fisheries convened a special meeting of its west coast Institutional Animal Care and Use Committee to discuss further monitoring and other steps to help ensure the welfare of the whale. They received a veterinary report on the whale based on photographs. They recommended continued monitoring of the whale.