

Mapping the Arctic Ocean Fisheries Data Ecosystem: using network science and linked data to enhance data access

Peter L. Pulsifer
Chair, IASC-SAON Arctic Data Committee
Research Scientist, National Snow and Ice Data Center, University of Colorado

Third Meeting of Scientific Experts on Fish Stocks in the Central Arctic
Northwest Fisheries Science Center
2725 Montlake Boulevard East
Seattle, WA

Dates: April 14– 16 2015

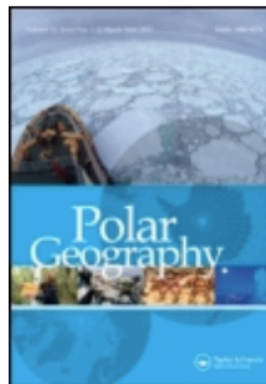
Objectives

- Provide participants of the **3rd Meeting of Scientific Experts on Fish Stocks in the Arctic Ocean** with background information on the IASC-SAON Arctic Data Committee and its activities
- Propose a “straw man” model that outlines how the Arctic fisheries community represented at the meeting could develop an Inventory of Arctic Research and Monitoring Data

Overview of Developments

- International Polar Year 2007-09 catalyzed development in the area of polar data management, including expansion of the PDC
- Formal and informal international networks developed
- A series of major meetings/workshops held before during and after IPY (e.g. GeoNorth Yellowknife, IPY OSLO, IPY Montreal, ELOKA Boulder, Polar Data Forum Tokyo)

Minutes of the workshop of the
Arctic Data Coordination Network
IPY 2012, Palais des Congrès, Montréal, Québec, Canada
27 April 2012, 13:30-17:00



Polar Geography

Publication details, including instructions for authors and subscription information:

<http://www.tandfonline.com/loi/tpog20>

Introduction: local and traditional knowledge and data management in the Arctic

Peter L. Pulsifer^a, Henry P. Huntington^b & Gretta T. Pecl^c

^a Exchange for Local Observations and Knowledge of the Arctic (ELOKA), National Snow and Ice Data Center, University of Colorado, 449 UCB, Boulder, CO 80309, USA

^b Dr., Eagle River, AK

^c Fisheries, Aquaculture, of Tasmania, Hobart,

1 Background

Sustaining Arctic Observing Network (SAON)

SAON Data Management Workshop Report

Developing a Strategic Approach

Prepared By:
Gillian B. Lichota, NOAA Arctic Research Program
Simon Wilson, AMAP

and draf
volun



Data Science Journal, Volume 13, 30 October 2014

From

TOWARDS AN INTERNATIONAL POLAR DATA COORDINATION NETWORK

P. L. Pulsifer¹*, L. Yarmey¹, Ø. Godoy², J. Friddell³, M. Parsons⁴, W. F. Vincent⁵, T. de Bruin⁶, W. Manley⁷, A. Gaylord⁸, A. Hayes⁹, S. Nickels¹⁰, C. Tweedie¹¹, J. R. Larsen¹², and J. Huck¹²

¹National Snow and Ice Data Center, University of Colorado, 449 UCB, University of Colorado, Boulder, CO 80309-0449, USA

*Email: pulsifer@nsidc.org

²Norwegian Meteorological Institute, Henrik Mohns plass 1, 0313 Oslo, Norway

³Canadian Cryospheric Information Network, University of Waterloo, 200 University Ave. W., Waterloo, ON, N2L 3G1, Canada

⁴Research Data Alliance, Rensselaer Polytechnic Institute, Troy, NY 12180, USA

⁵CEN: Centre d'Etudes Nordiques, Laval University, Quebec City, G1V 0A6, Canada

⁶NIOZ Royal Netherlands Institute for Sea Research, Texel, The Netherlands

⁷Institute of Alpine and Arctic Research, University of Colorado, Boulder, CO 80309-0450, USA

⁸Nuna Technologies, PO Box 1483, Homer, AK 99603, USA

⁹Geomatics and Cartographic Research Centre, Carleton University, 1125 Colonel By Dr., Ottawa, ON, K1S 5B6, Canada

¹⁰Inuit Quajisarvingat, Suite 1101, 75 Albert St., Ottawa, Ontario, K1P 5E7, Canada

¹¹Biology and the Environmental Science and Engineering Program, University of Texas at El Paso, El Paso, TX 79968, USA

¹²University of Alberta Libraries, University of Alberta, Edmonton, Alberta, T6G 2J8, Canada

ABSTRACT

Data management is integral to sound polar science. Through analysis of documents reporting on meetings of the Arctic data management community, a set of priorities and strategies are identified. These include the need to improve data sharing, make use of existing resources, and better engage stakeholders. Network theory is applied to a preliminary inventory of polar and global data management actors to improve understanding of the emerging community of practice. Under the name the Arctic Data Coordination Network, we propose a model network that can support the community in achieving their goals through improving connectivity between existing actors.

Keywords: Data management, Network, Arctic, Antarctic, International Polar Year, Interoperability, Data sharing

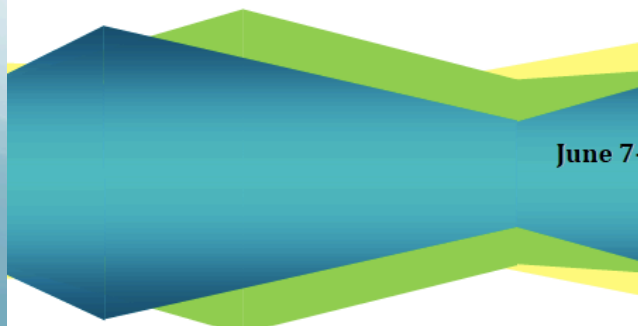
1 INTRODUCTION

Well defined, efficient, and sustainable data management is a prerequisite to moving Arctic observing initiatives from a loose collection of individual projects and missions to a unified observing system advancing a common

coordinators) share their
training core data services

Il unresolved deficiencies
I reuse existing and new
al research programs is
d verification purposes.
ng these goals requires
positories, and a change
ns that have traditionally
ging and publishing data
tem plans.

(ASC), the two lead non-
science planning activities
) Both organizations are
slopment of robust polar
CAR-sponsored science
d to promote the funding



DM Recognized by International Science Bodies

Statement of Principles and Practices for Arctic Data Management April 16, 2013

All IASC-endorsed scientific results shall be verifiable and reproducible through ethically open access to all data necessary to produce those results. Data shall be preserved, accessible, and used in accordance with scientific norms of fair attribution and use.

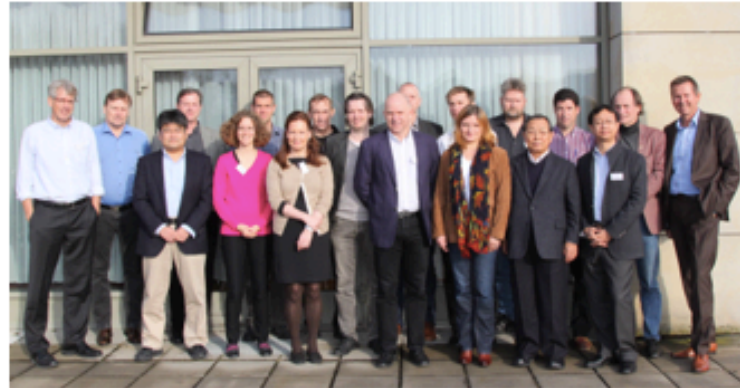
To this end, IASC Council approves the following actions:

1. Endorsement of the Statement of Principles and Practices for Arctic Data Management;
2. Establishment of an IASC Data Standing Committee;
3. To undertake measures towards adoption of national data policies consistent with

Formation of the Arctic Data Committee, Nov. 2014

1st Meeting of the IASC Data Standing Committee (IDSC) and SAON Committee on Data and Information Services (CDIS)

Report of the 1st Meeting of the Arctic Data Committee



Meeting Details

Meeting: 1st Meeting of the IASC Data Standing Committee (IDSC) and SAON Committee on Data and Information Services (CDIS)

Time: 10 November 2014, 14:00 – 18:00 ; 11 November 08:30 – 13:00 (CET)

Location:

Mercure Hotel Potsdam City
Lange Brücke
14467 Potsdam
Germany
Room: Studio 1+2.

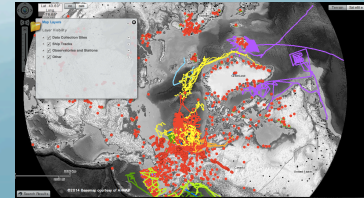
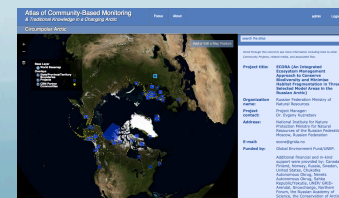
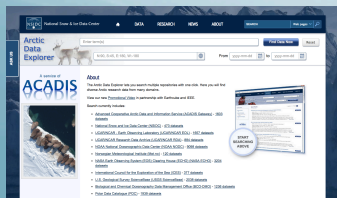
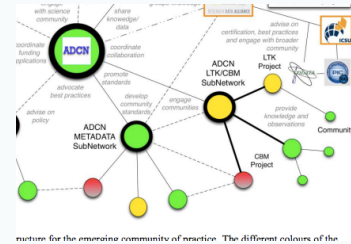
Confirmation of Key Priorities

- **Documenting and understanding the Arctic data management ecosystem**
- Identifying common metadata elements
- Engaging in data citation and publication movement
- Promoting interoperability through action – interoperability experiment

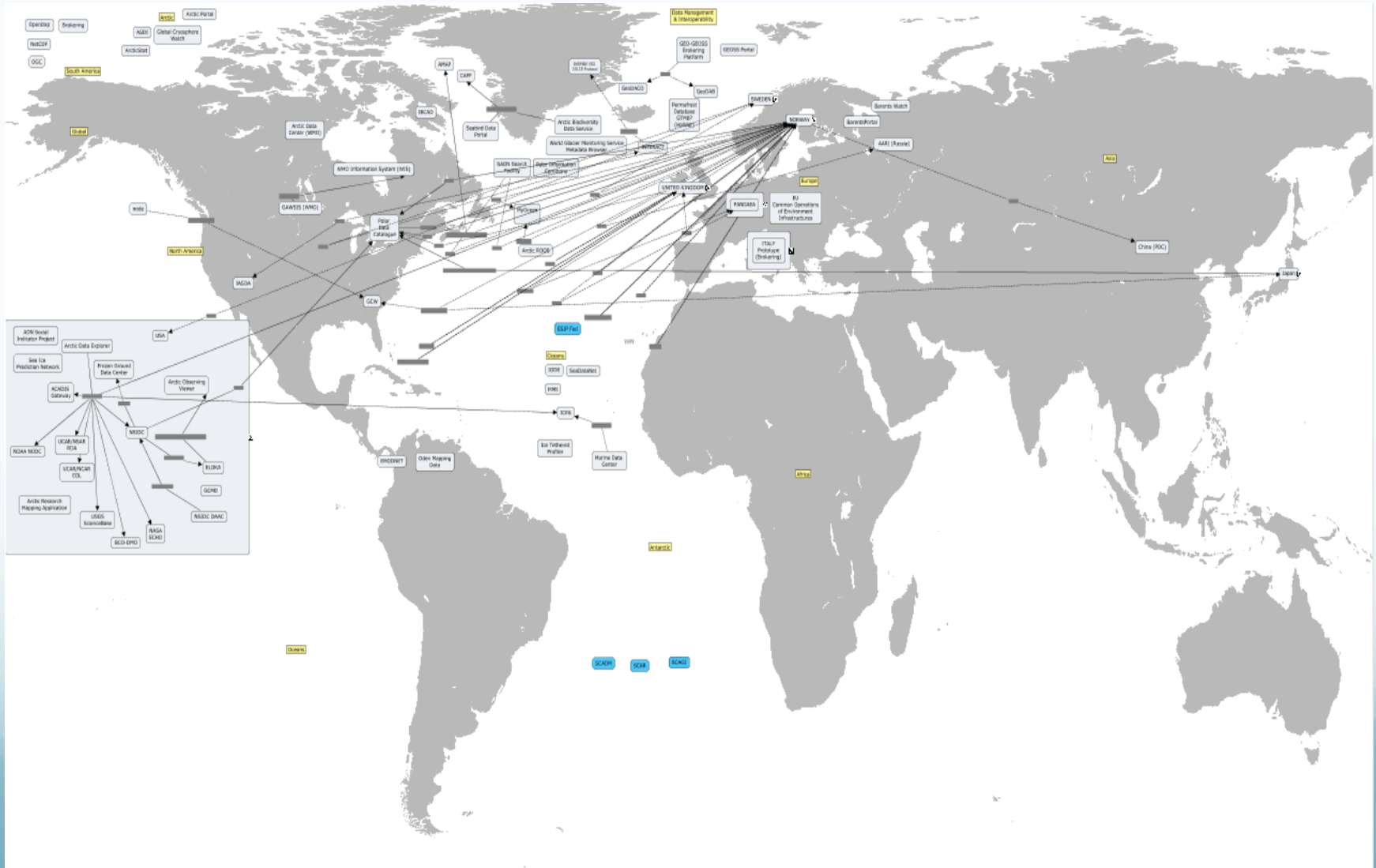
Mapping the Arctic Ocean Fisheries Science Data Ecosystem

Documenting and understanding the Arctic data management ecosystem

- First work package of ADC
- Network/concept map & geographic map
- Visual product... built on “linked data” database
 - Node (e.g. “data center”) + relationship (e.g. “hosts”) + node (e.g. “data set”)
- Initially use manual methods to build database – over time this can be complemented by (semi-)automatic methods
- Focus on **aggregator nodes** (e.g. IARPC, ADE, IASOA, GTN-P, Arcticcbm.org, AOV etc.)

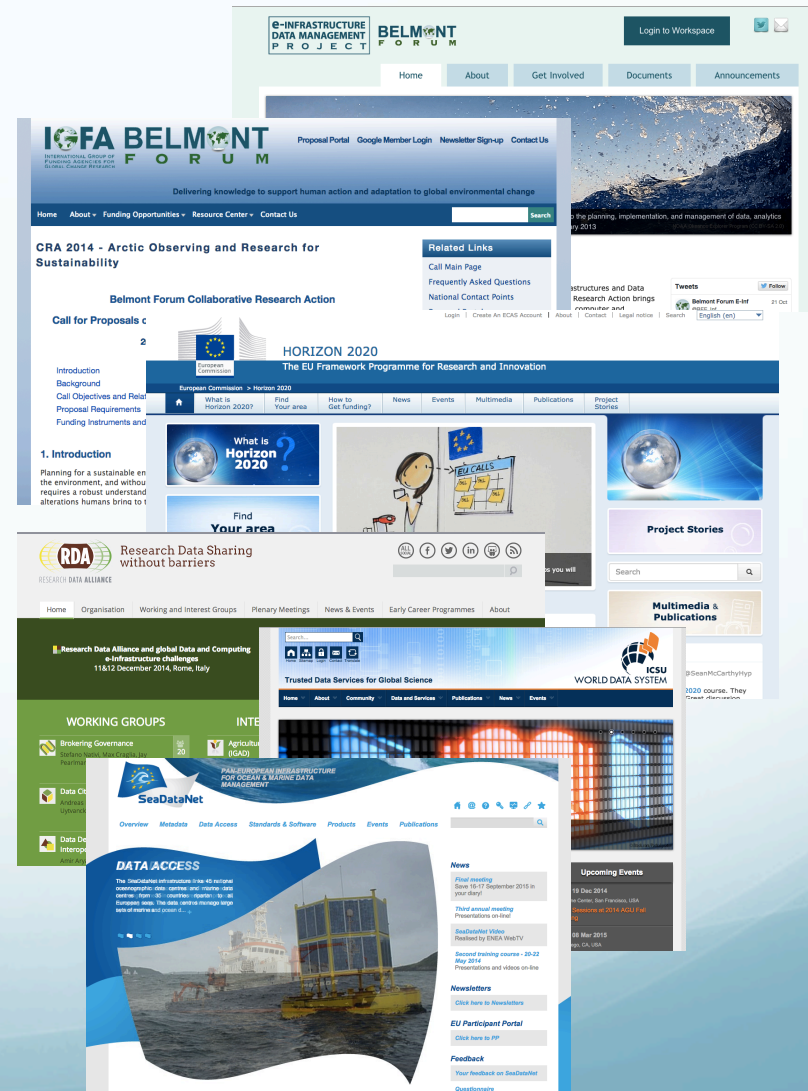


Building the “Map”

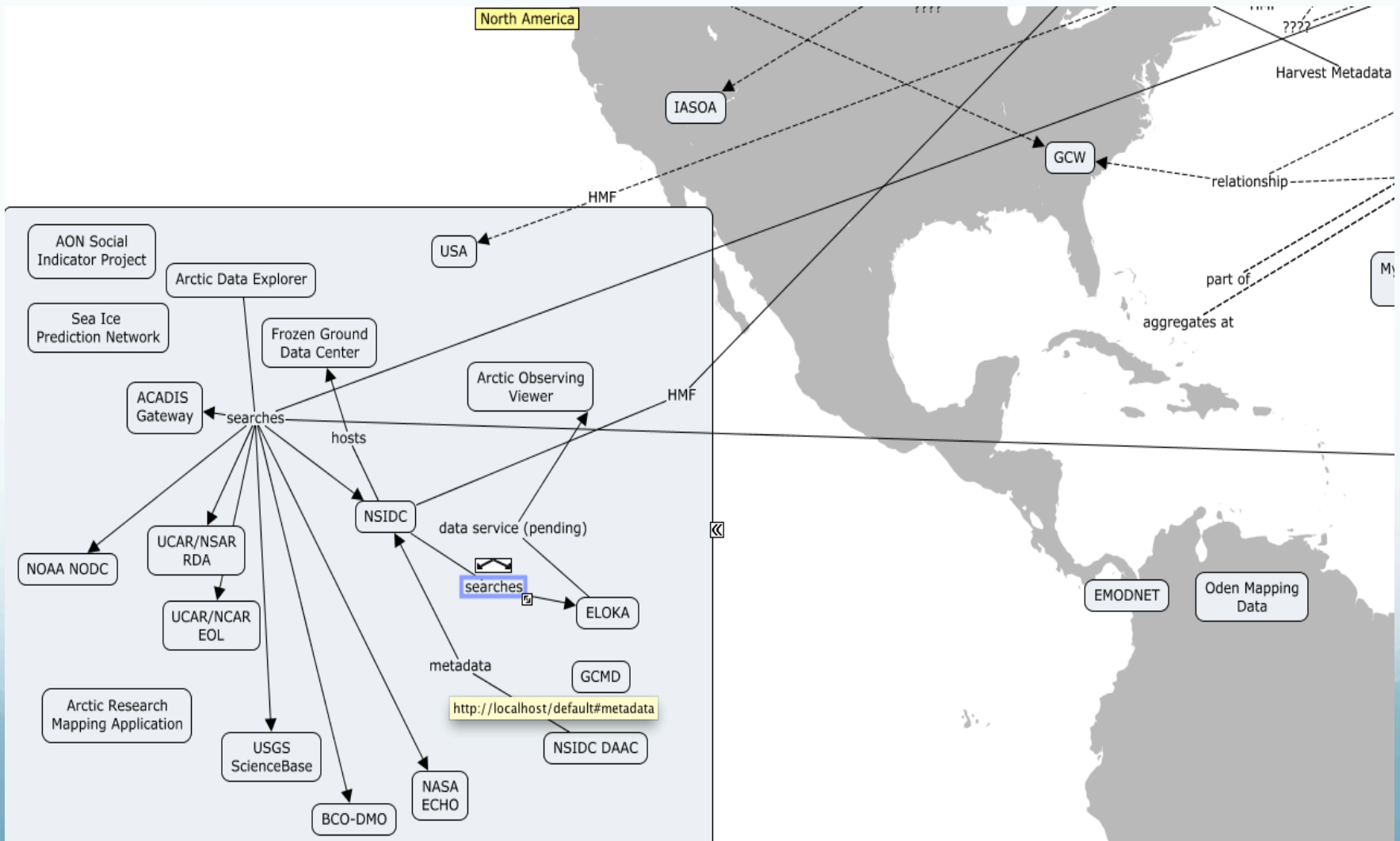


Related International Initiatives

- Belmont Forum
 - Arctic Observing and Research for Sustainability Call
 - Six national PIs (Canada, China, Japan, Norway, Russia, US) + partners applied to support DM network
 - E-Infrastructure Data Management Project
- European Commission – Horizon 2020
 - Recently fund EU-PolarNet
- Research Data Alliance, World Data System and other programs well established
- Well established international programs exist and can act as reference: e.g. IODE, SeaDataNet



Complex System

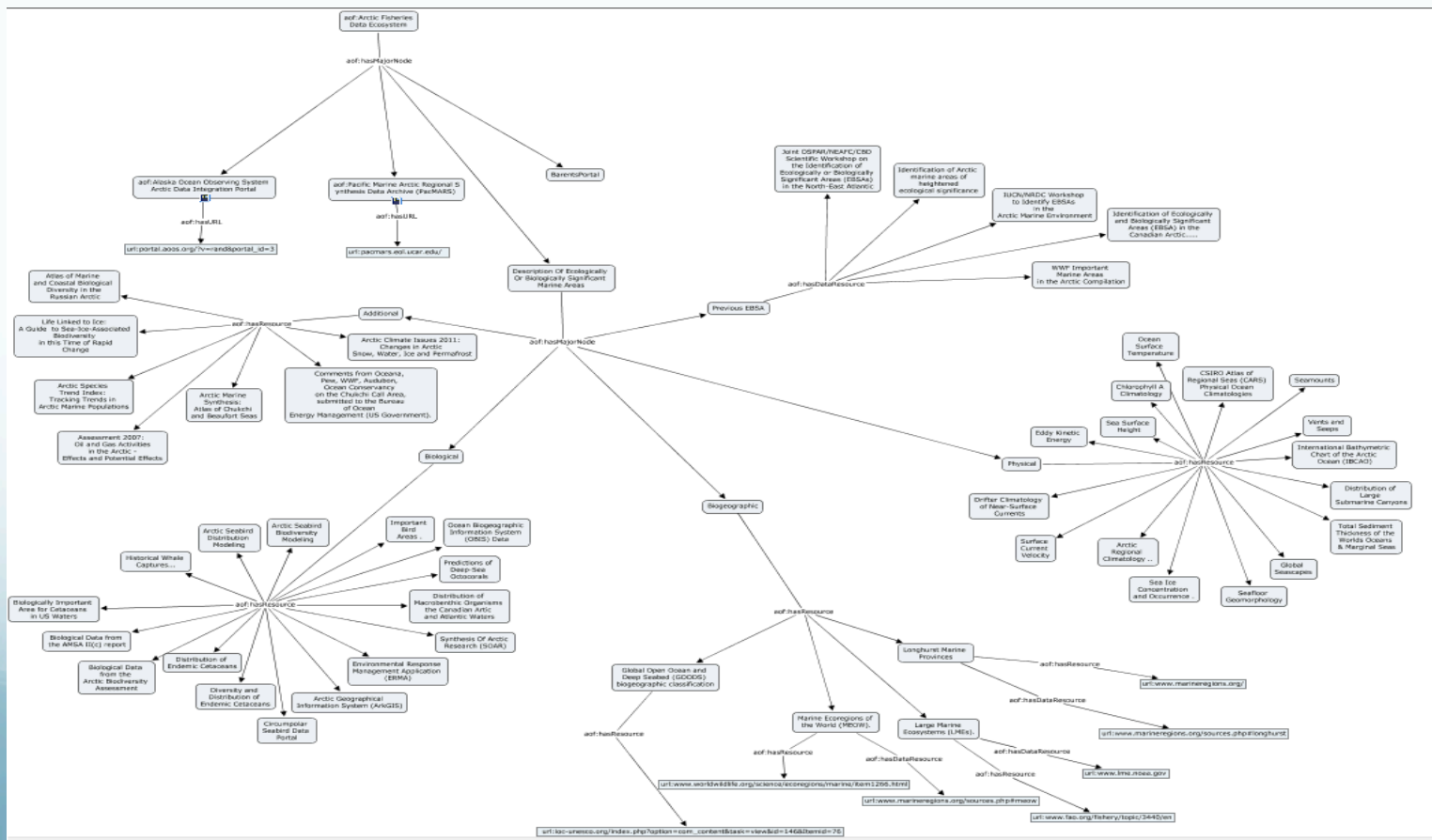


Documenting and Understanding the Arctic Fisheries Science Data Ecosystem

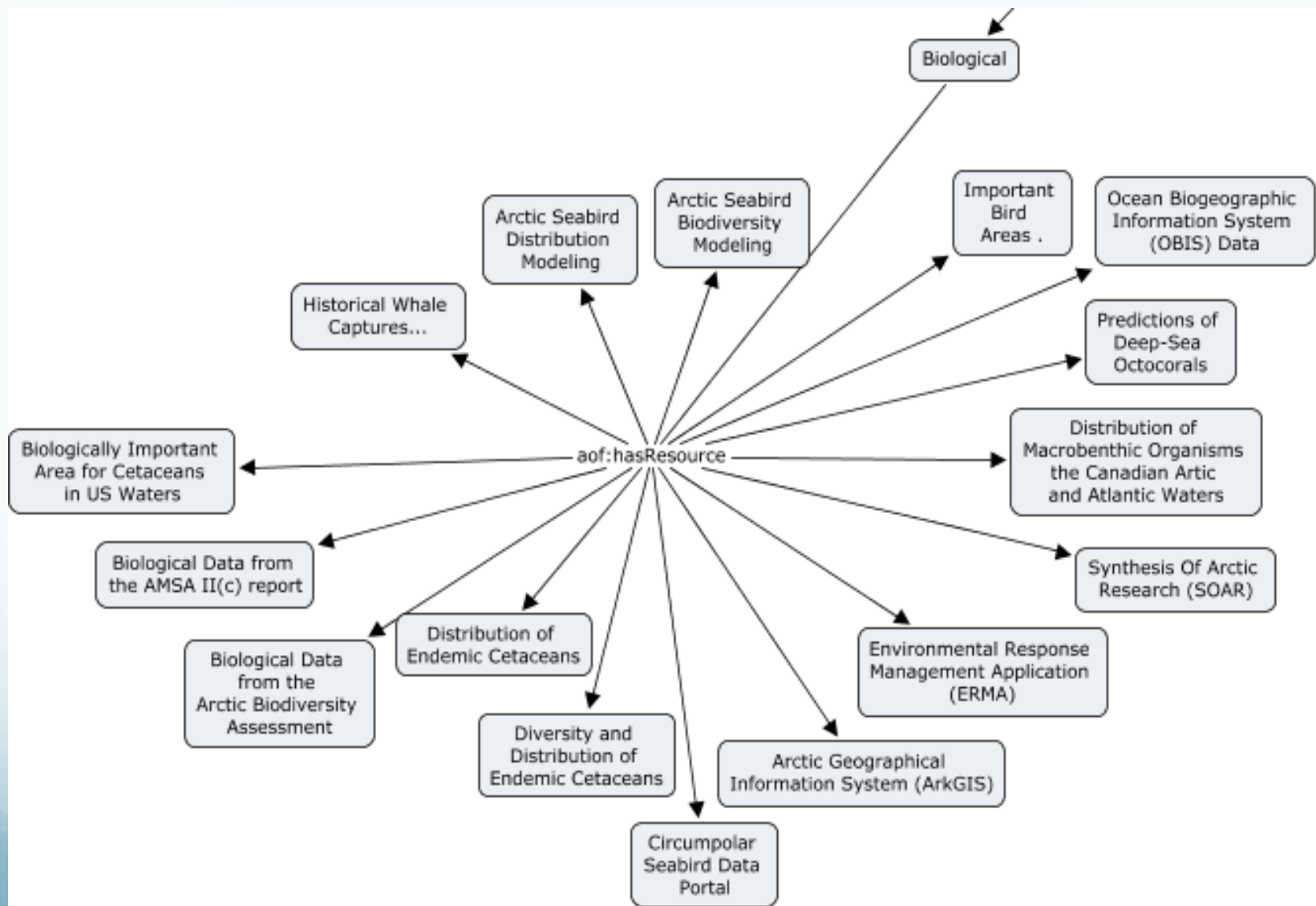
- **Community has already done significant work in identifying relevant data:**
- Alaska Ocean Observing System Arctic Data Integration Portal
http://portal.aos.org/?v=rand&portal_id=3
- Pacific Marine Arctic Regional Synthesis Data Archive (PacMARS) <http://pacmars.eol.ucar.edu/>
- Data to Inform the Arctic Regional Workshop to Facilitate the Description of Ecologically or Biologically Significant Marine Areas.
<http://www.cbd.int/doc/meetings/mar/ebsaws-2014-01/official/ebsaws-2014-01-03-en.pdf>
- Barents Portal - The joint Norwegian Russian Environmental Status Report for the Barents Sea http://barentsportal.com/barentsportal_v2.5/index.php/en/

Preliminary Map

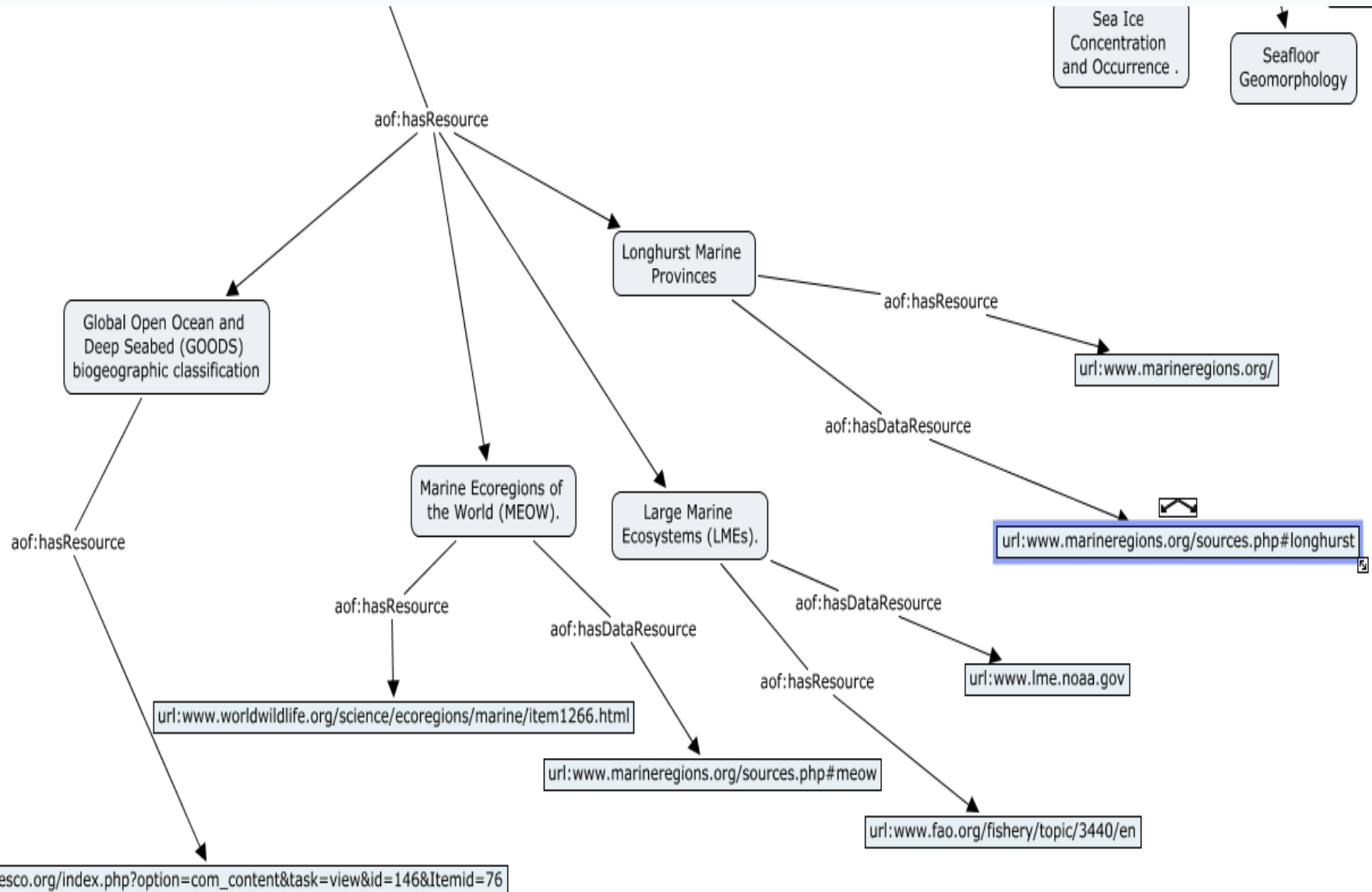
- *Data to Inform the Arctic Regional Workshop to Facilitate the Description of Ecologically or Biologically Significant Marine Areas.*



Preliminary Map



Preliminary Map



Documenting and understanding the Arctic fisheries science data Ecosystem

- *The proposal put forward here is to explore and discuss the possibilities for engaging the Arctic Fisheries community in the broader ADC initiative to map the Arctic data ecosystem to enhance data access.*
 - COMMENTS?