

Preliminary results of the 2005 Bogoslof EIT pollock survey

Denise McKelvey

Alaska Fisheries Science Center
Seattle WA 98115

March 6 –13, 2005
RV Miller Freeman



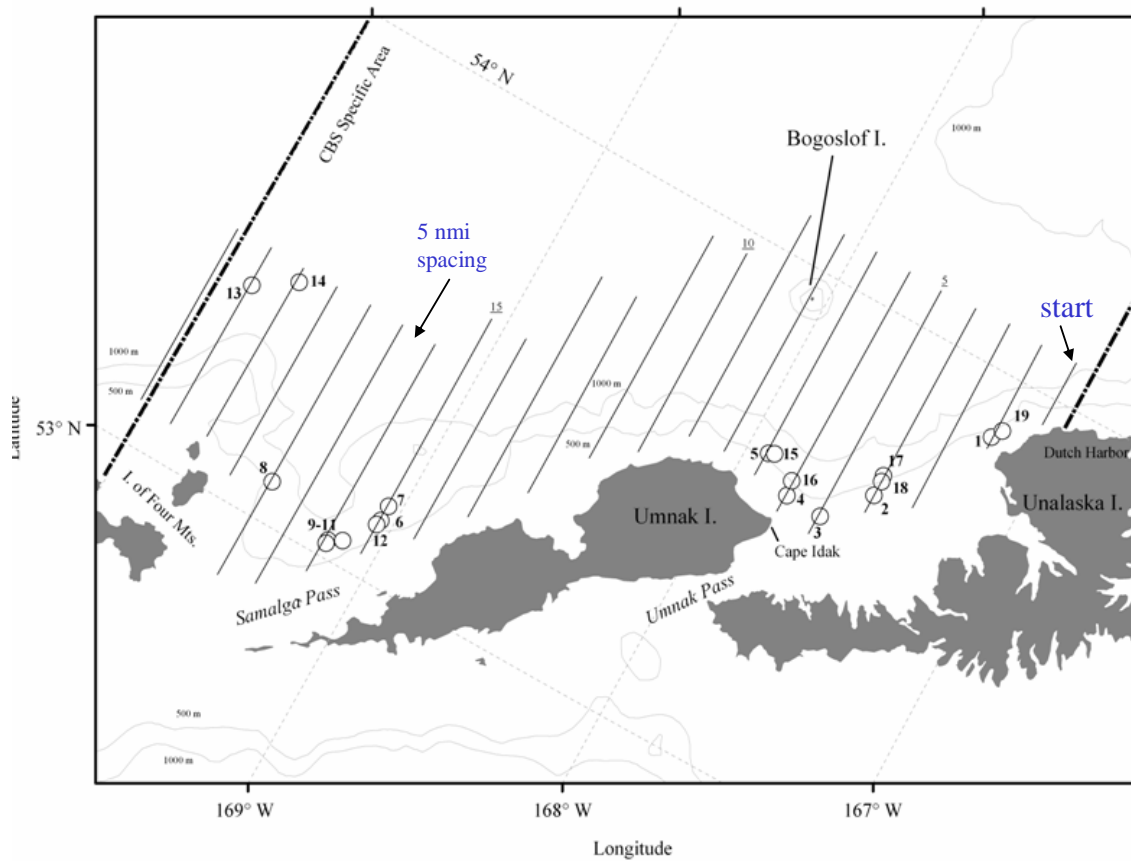


Figure 1. Trackline (22) and haul location (19 circles) from the winter 2005 echo integration-trawl survey in the Bogoslof Island area. Transect numbers are underlined. The dash-dotted line indicates the NPFMC Area 518/Central Bering Sea Specific Area.

Table 1.--Catch by primary species from 19 midwater trawl hauls during the winter 2005 echo integration-trawl survey of walleye pollock in the Bogoslof Island area.

Species Name	Scientific Name	Weight (kg)	Percent by weight	Numbers
walleye pollock	<i>Theragra chalcogramma</i>	14,489.28	94.3	12,009
Pacific ocean perch	<i>Sebastes alutus</i>	616.51	4.0	625
*other		255.45	1.7	13,137
		15361.24		25,771

* mostly lanternfish

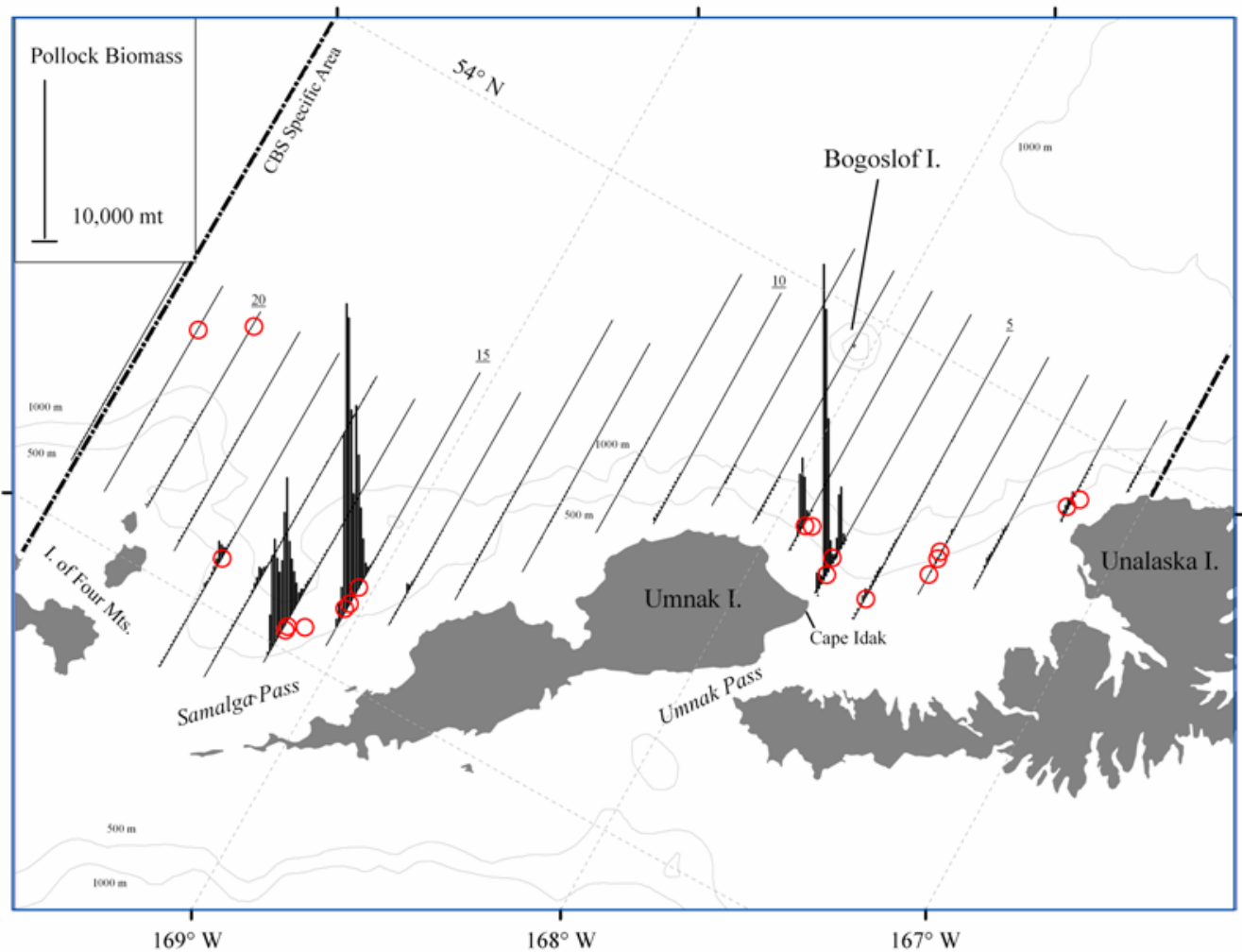


Figure 2. Trawl haul location (circles) and biomass (10,000 metric tons) attributed to pollock observed during the winter 2005 echo integration-trawl survey in the Bogoslof Island area.

Echogram of transect 15, Samalga Pass region

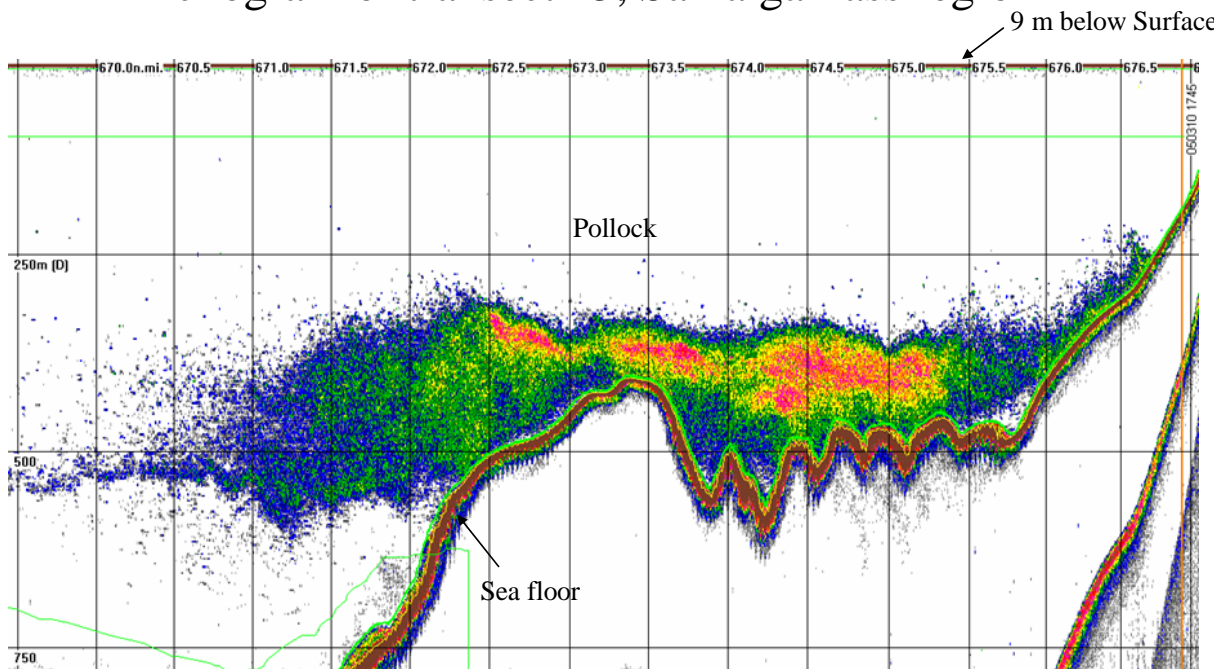


Figure 3. Pollock backscatter along transect 15, Samalga Pass region, where 3 trawl hauls were conducted.

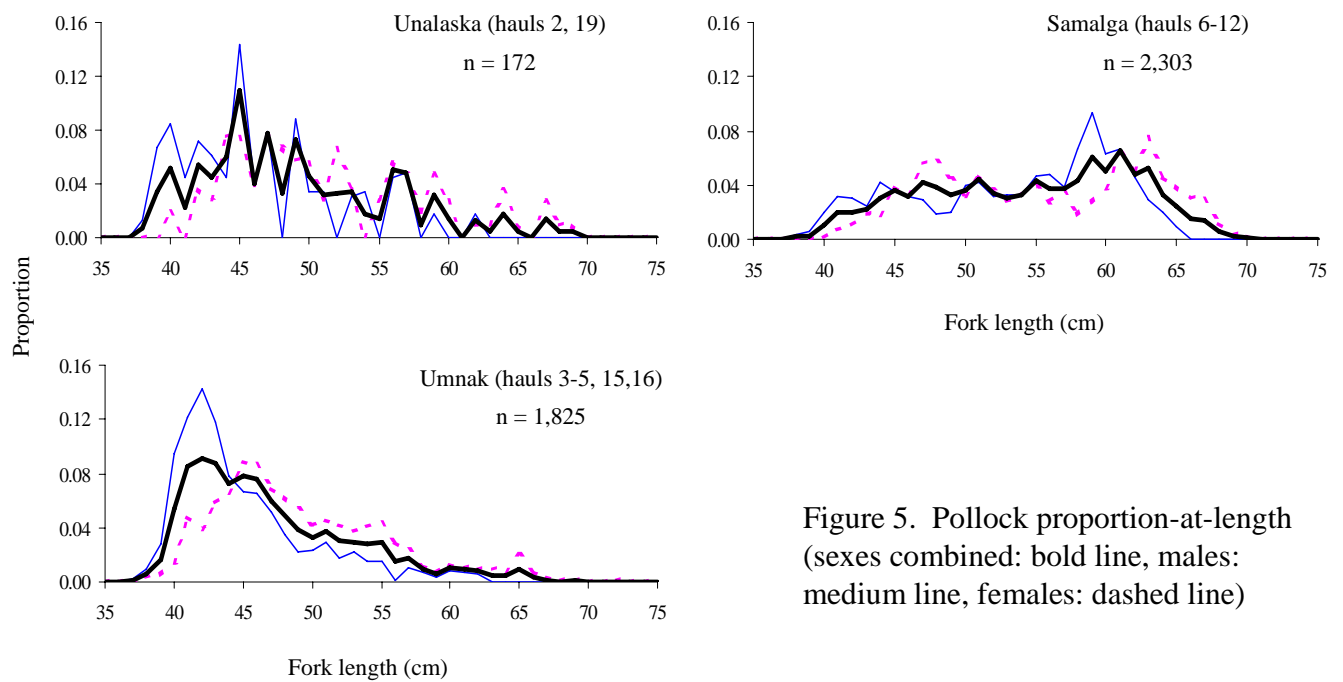


Figure 5. Pollock proportion-at-length (sexes combined: bold line, males: medium line, females: dashed line)

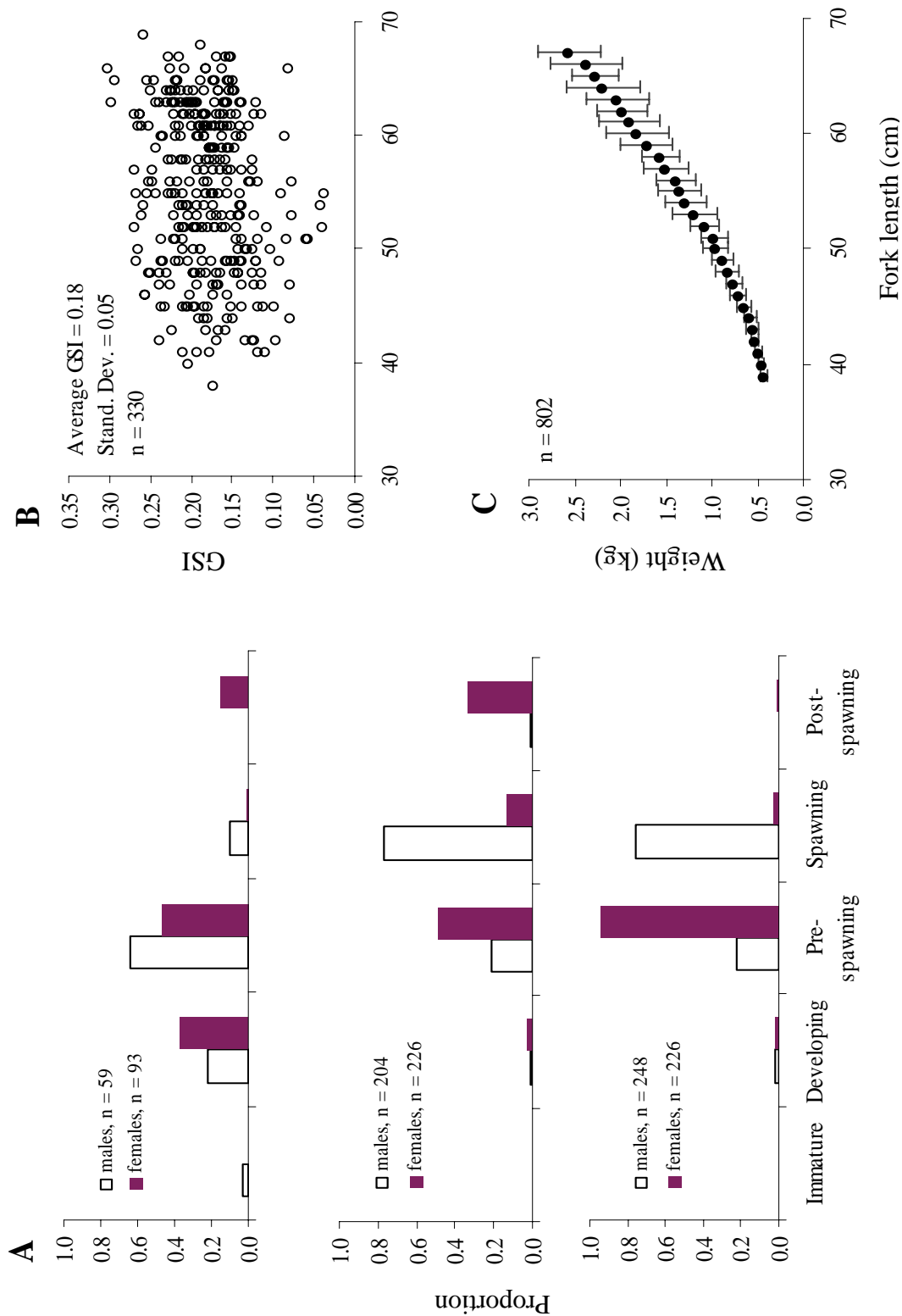


Figure 4. Pollock maturity stages for strata 1-3 (A), gonado-somatic index (GSI) for pre-spawning females as a function of fork length (cm) (B), and mean weight at length, where at least 5 fish were measured (sexes combined) (C). Vertical bars indicate one standard deviation.

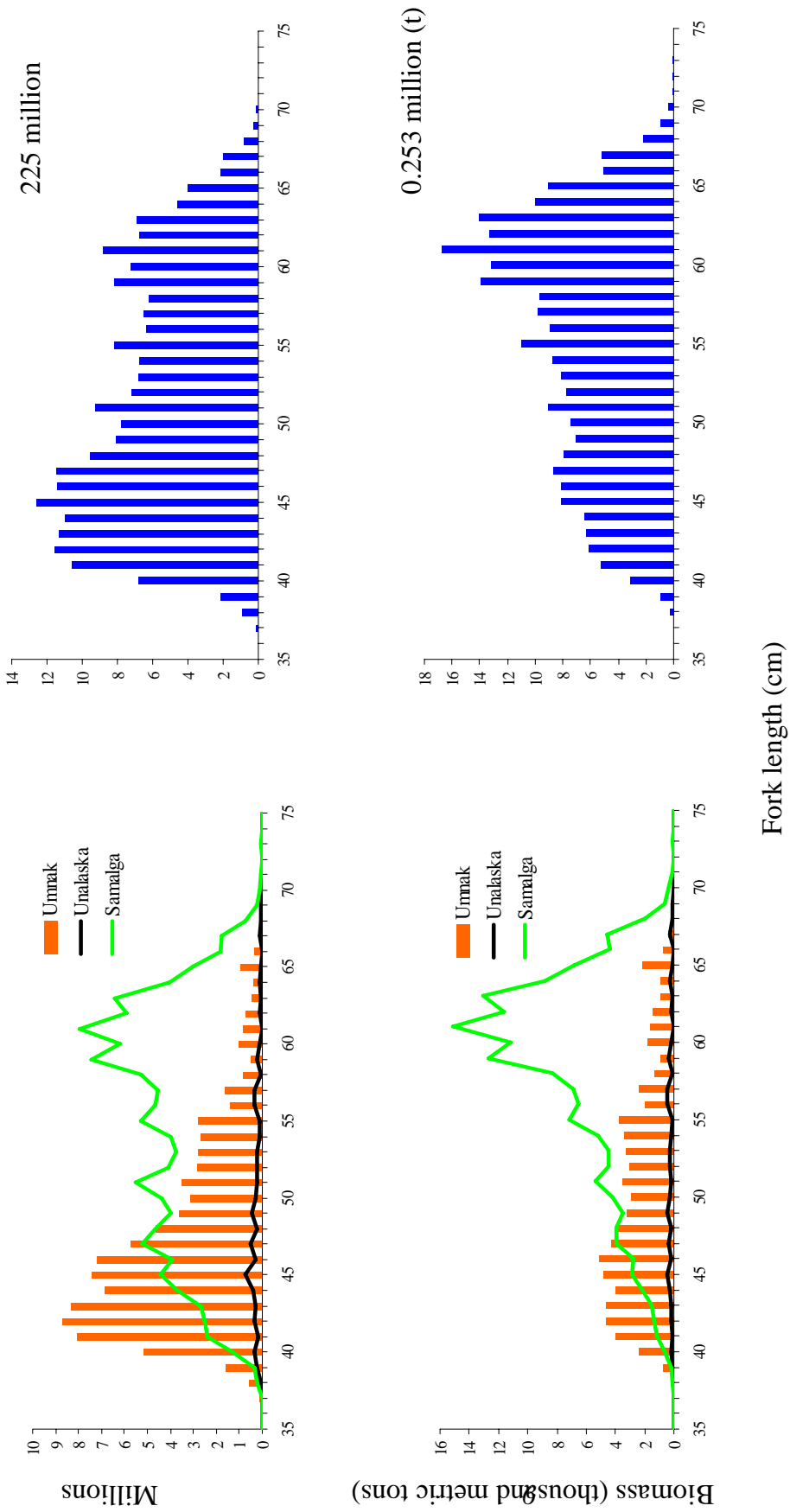


Figure 6. Population-at-length (top) and biomass-at-length (bottom) estimates from the winter 2005 echo integration-trawl survey of walleye pollock in the Bogoslof Island area.

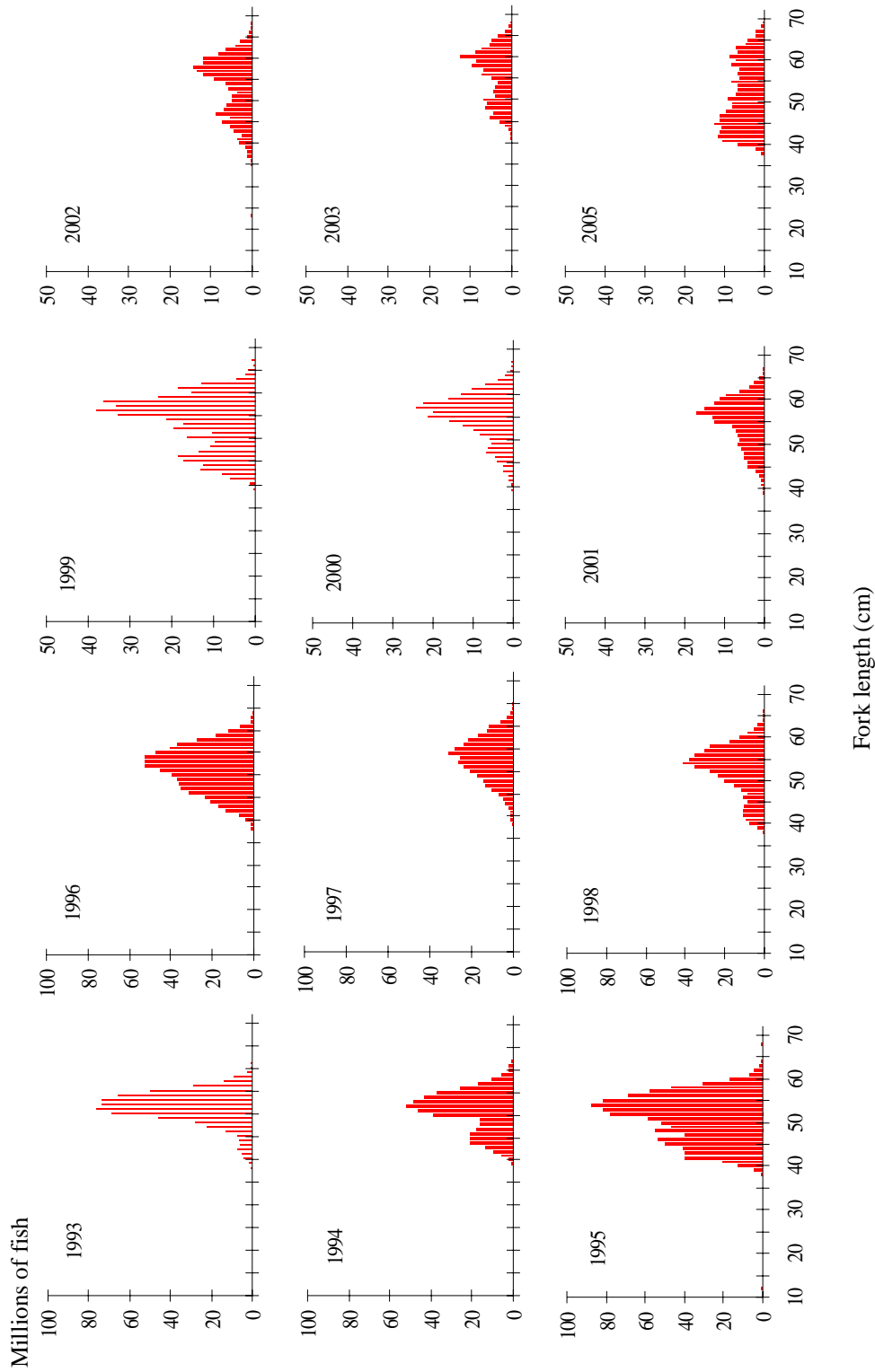


Figure 7. Numbers-at-length estimates (millions) from echo integration-trawl surveys of spawning pollock near Bogoslof Island in winter 1993-2005. The United States conducted all but the 1999 survey, which was conducted by Japan. Note y-axis scales differ.

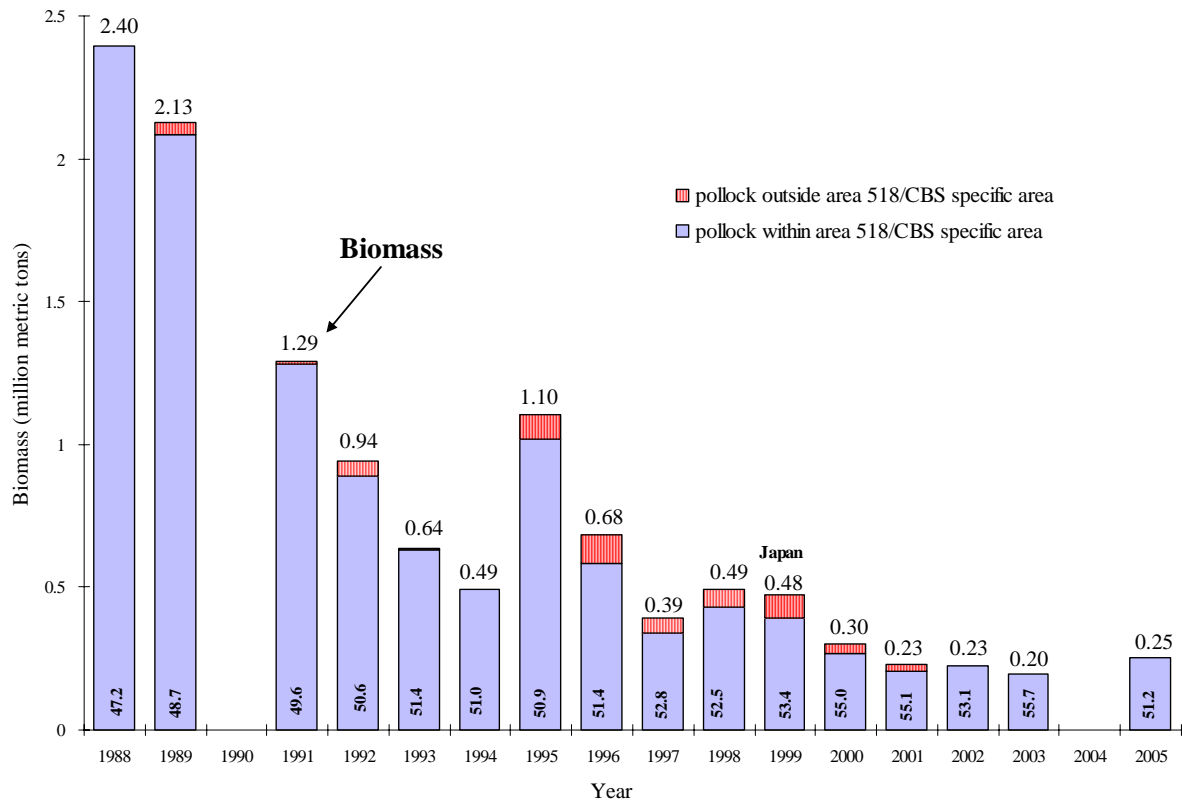


Figure 8. Biomass estimates (top of each bar) and average fork lengths (cm) (inside bar) obtained during winter echo integration-trawl surveys for walleye pollock in the Bogoslof Island area, 1988-2005. The U.S. conducted all but the 1999 survey, which was conducted by Japan.