

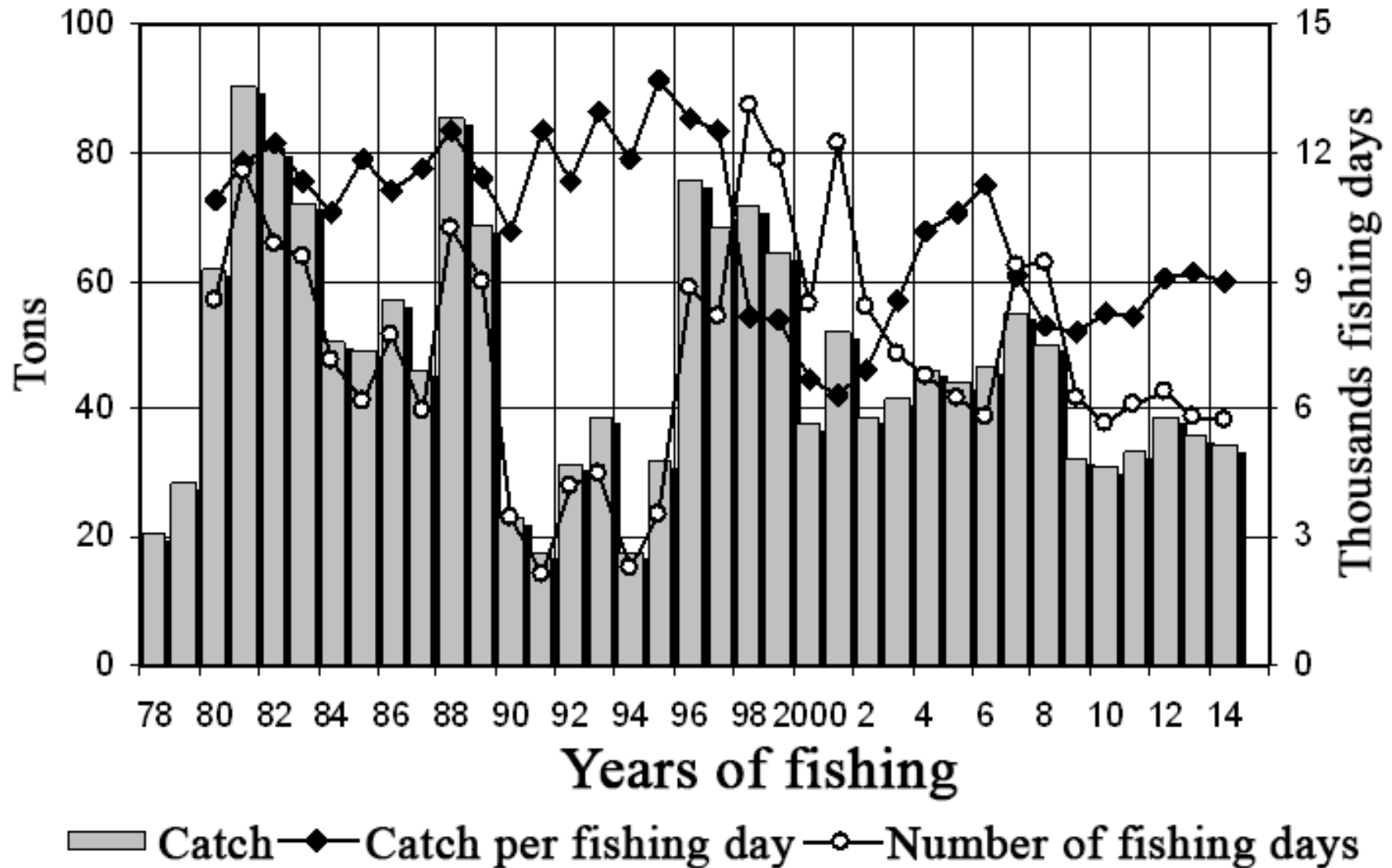
**20th THE SCIENTIFIC AND TECHNICAL COMMITTEE OF THE
PARTIES TO THE CONVENTION ON THE CONSERVATION AND
MANAGEMENT OF POLLOCK RESOURCES IN THE CENTRAL
BERING SEA**

**Year 2014-2015 Research on the Status of Bering Sea Pollock
Stocks**

**Paper submitted
by
the Russian Federation**

August 4, 2015

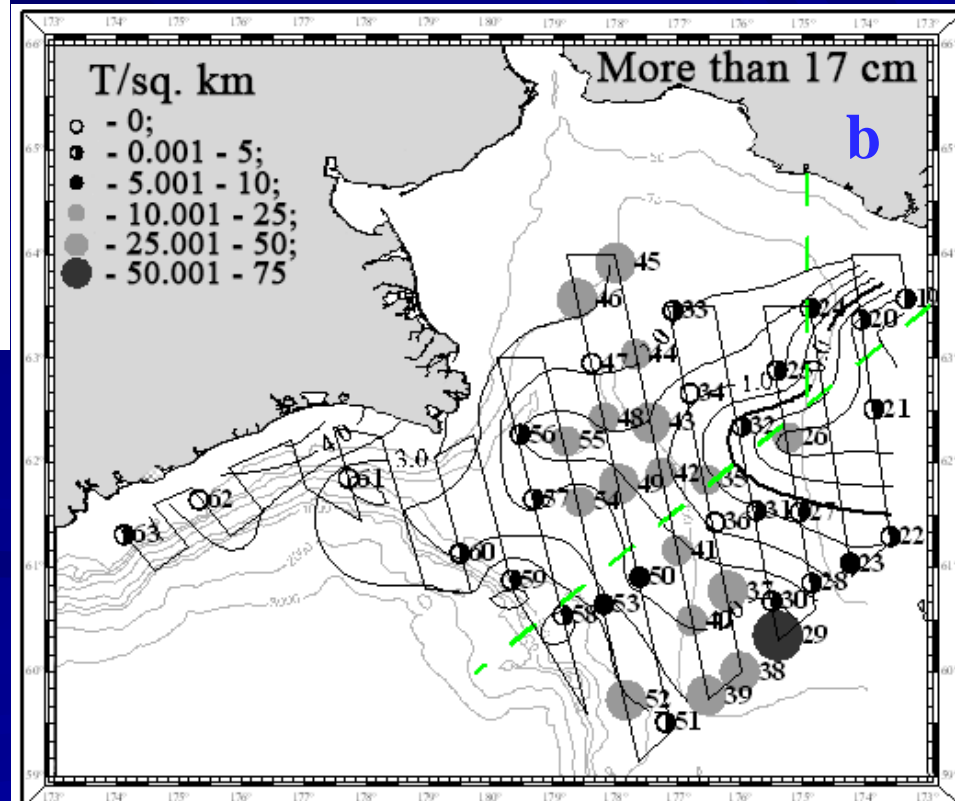
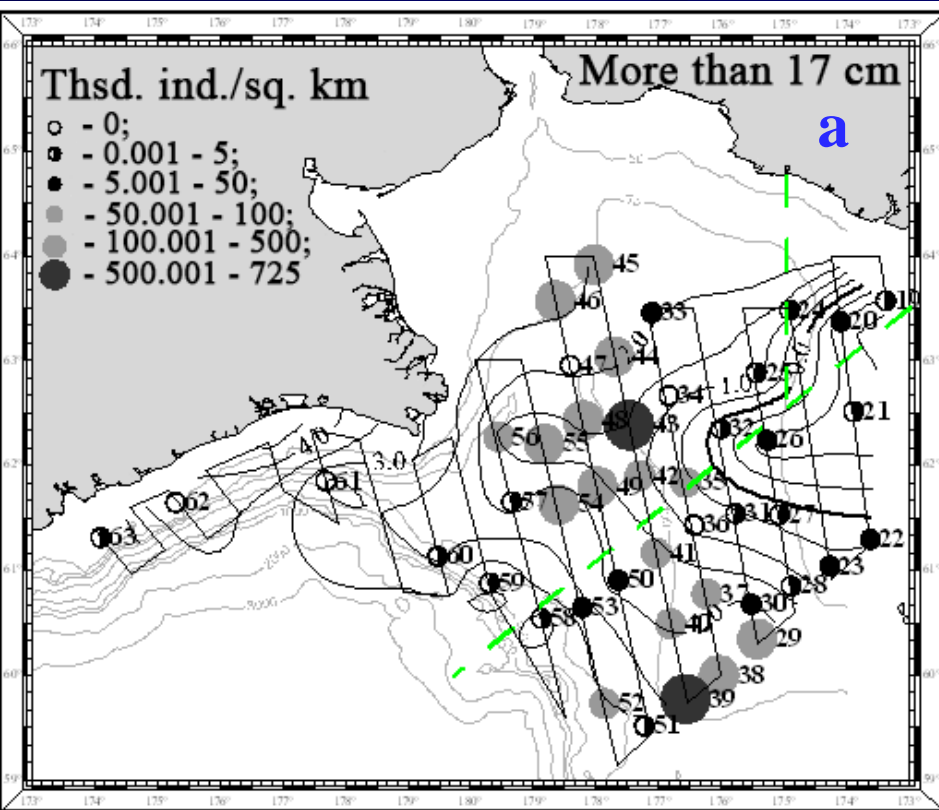
Northern Bering Sea pollock



Catch of pollock in the Navarin area ($\times 10^4$ t), the estimated number of fishing day and catch per fishing day in 1978-2014

Northern Bering Sea Pollock

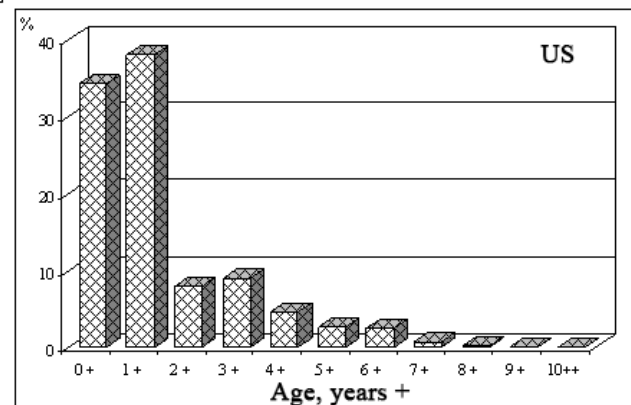
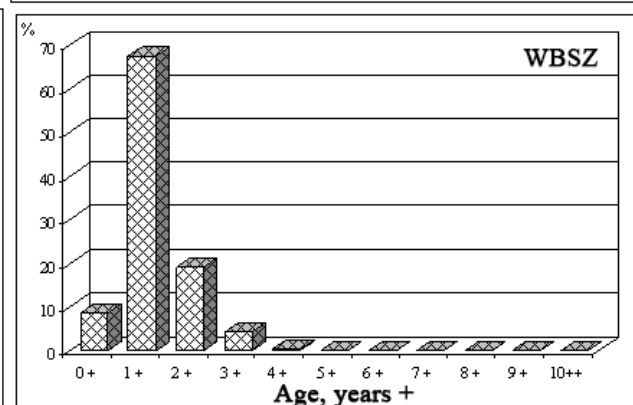
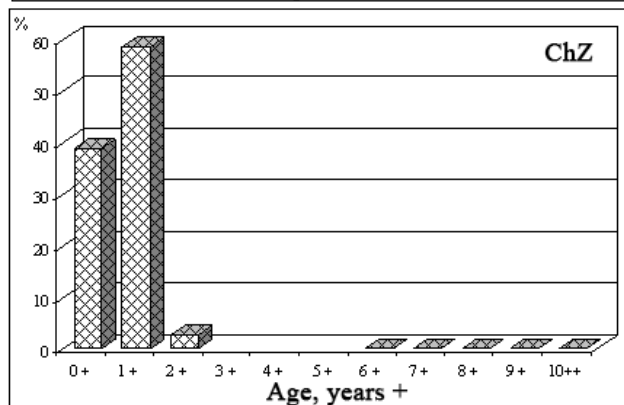
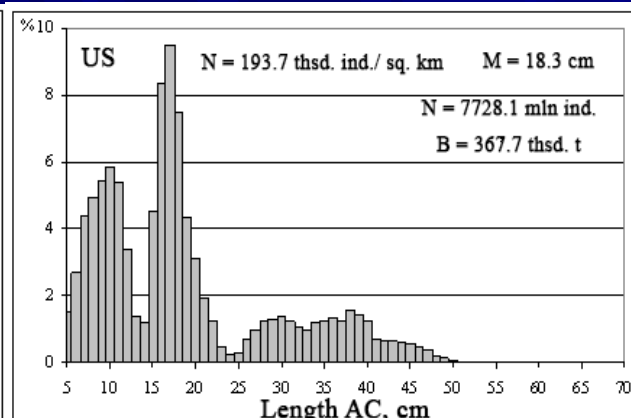
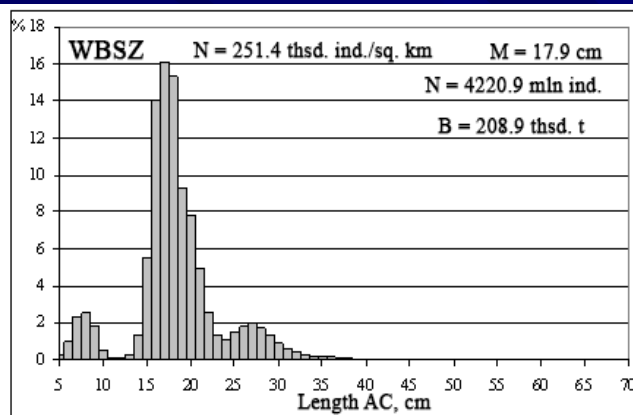
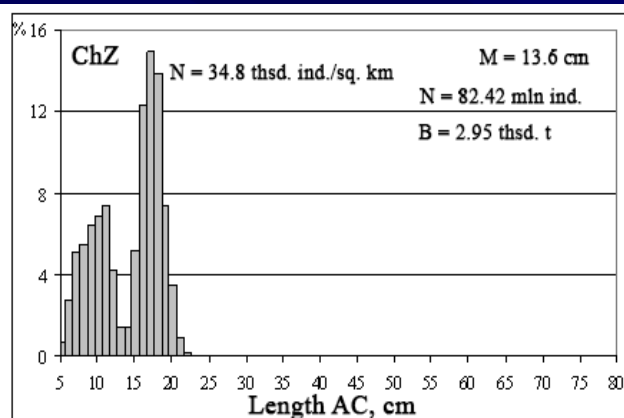
EIT survey



Numbers on tracklines - haul numbers
Pollock (size more than 17 cm)
abundance (a-ind./sq.km) and
biomass (b- mt/sq.km) density
distribution and bottom
temperature, September 16 - October
2, 2014

Northern Bering Sea Pollock

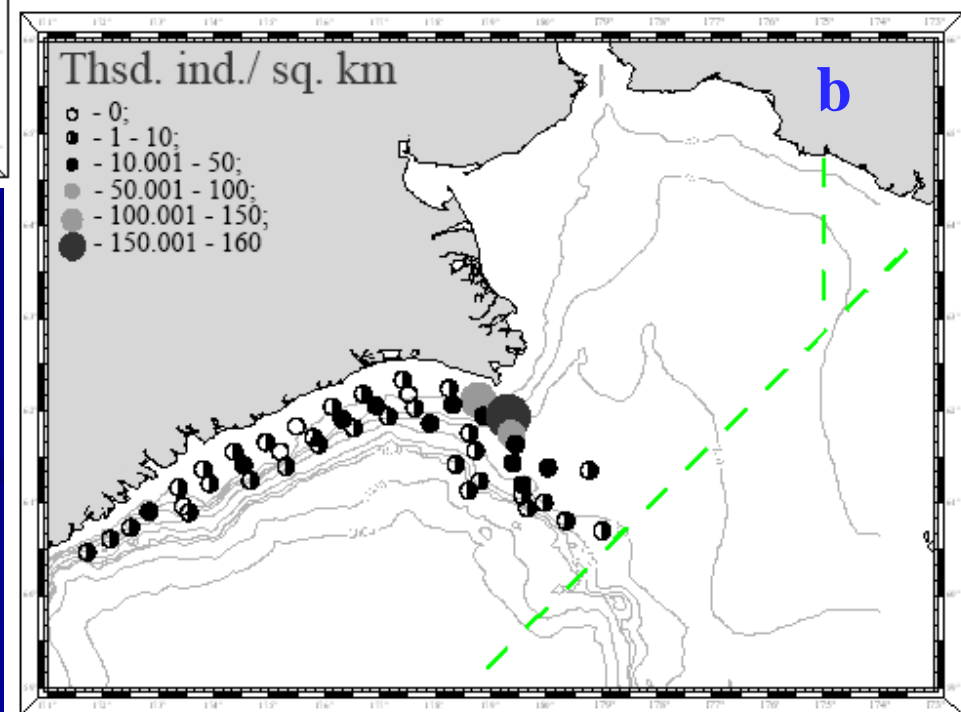
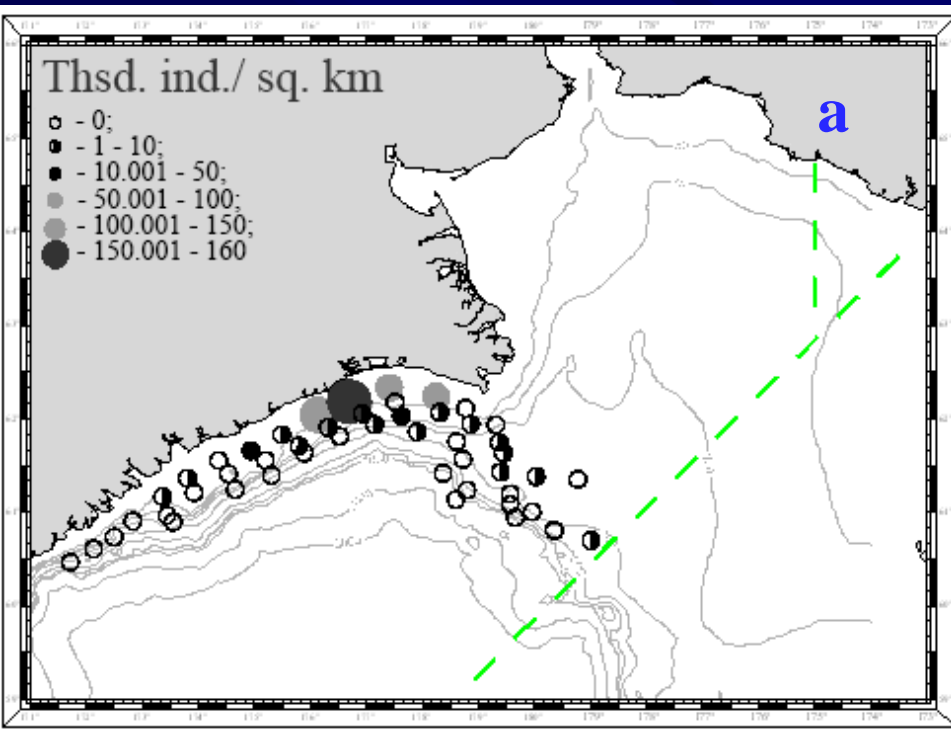
EIT survey



Pollock length and age composition, September 16 - October 2, 2014 (ChZ - Russian EEZ to east 175°W, WBSZ-Russian EEZ to west 175°W; US - US EEZ to north 59°N)

Northern Bering Sea Pollock

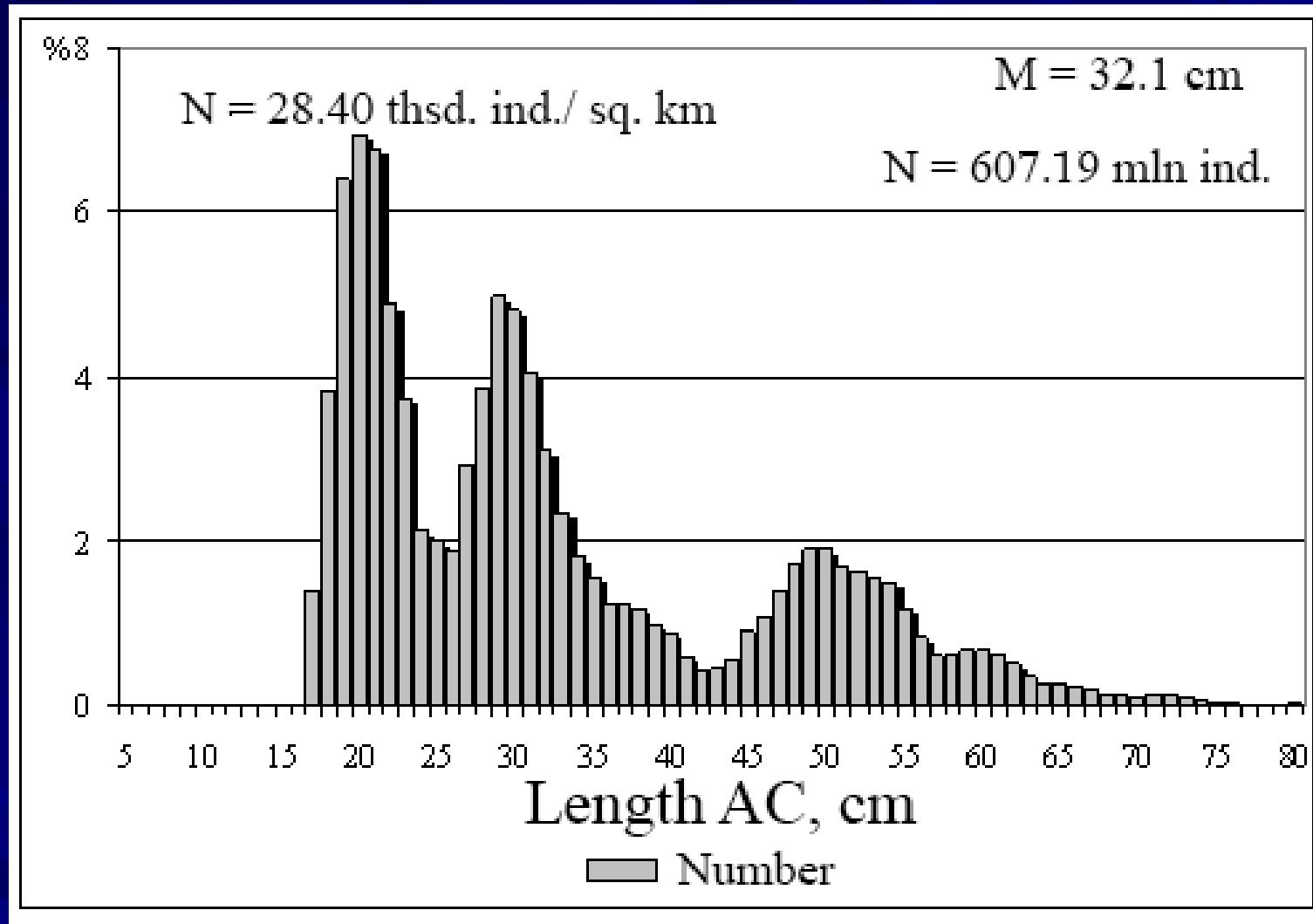
BT survey



Pollock (size less than 17 cm (a), more than 17 cm (b)) abundance density distribution (thsd. ind./sq. km), October 17-31, 2014

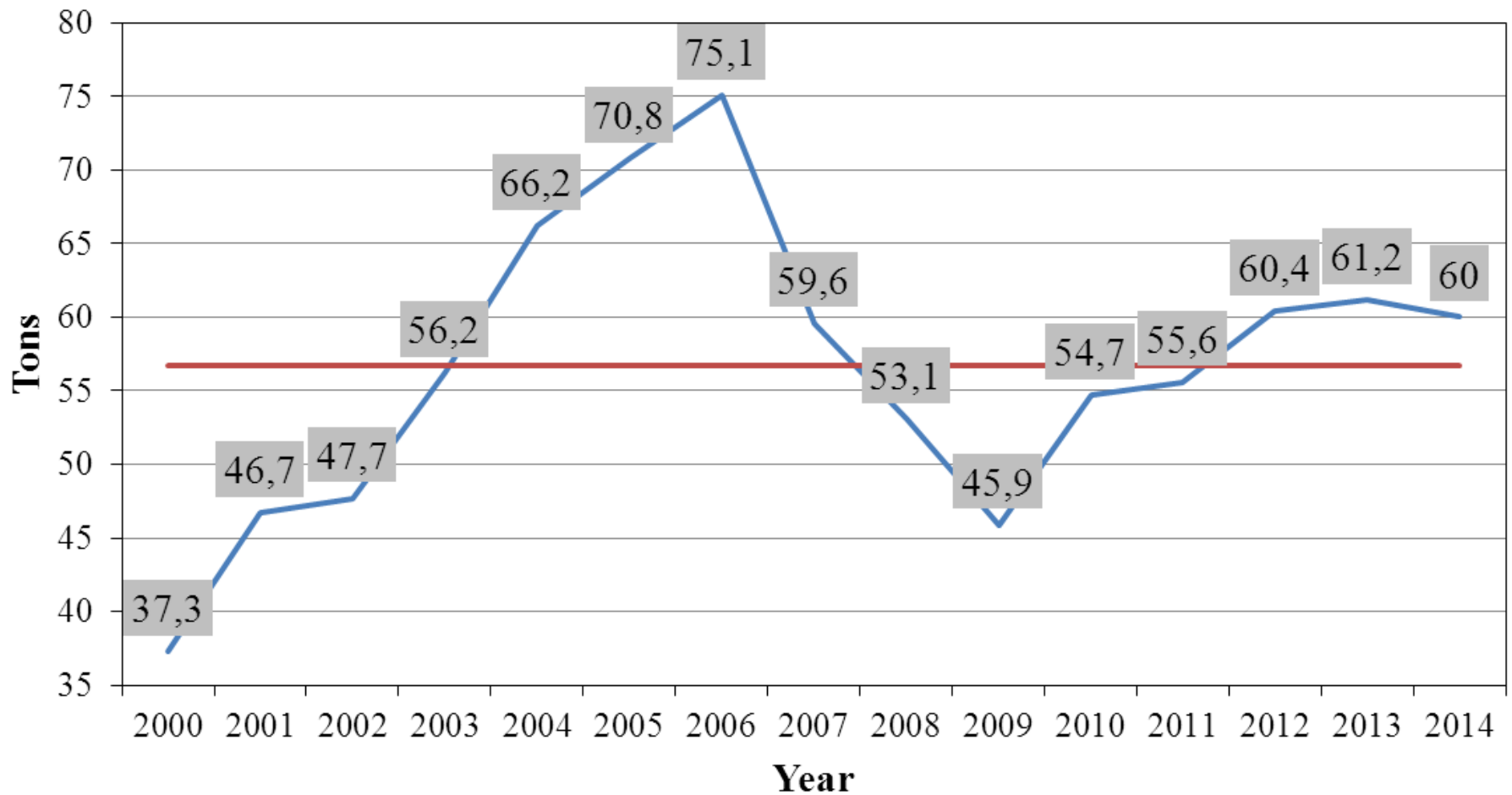
Northern Bering Sea Pollock

BT survey



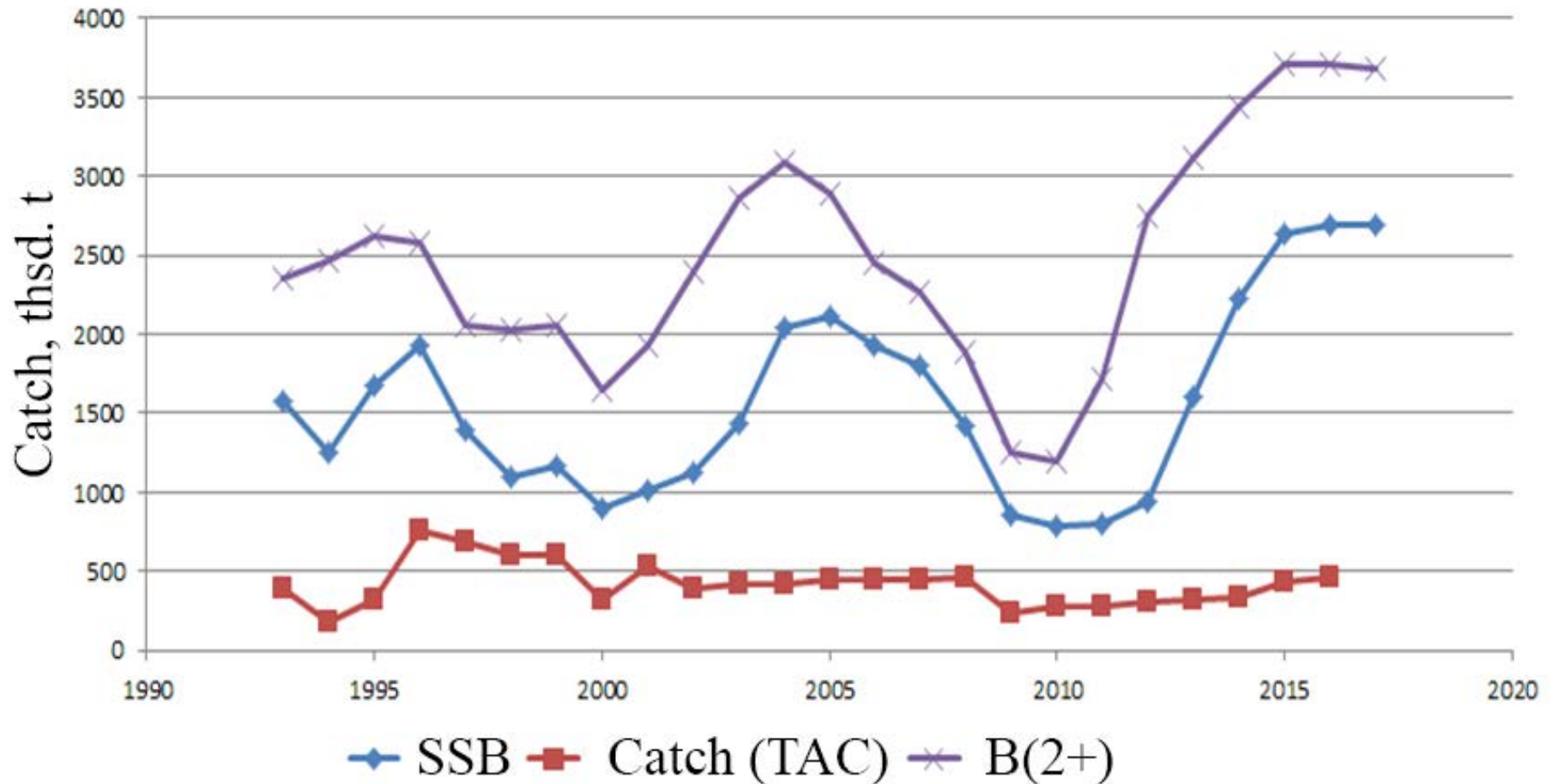
Pollock length composition to east 174° E, October 17-31, 2014

Northern Bering Sea pollock



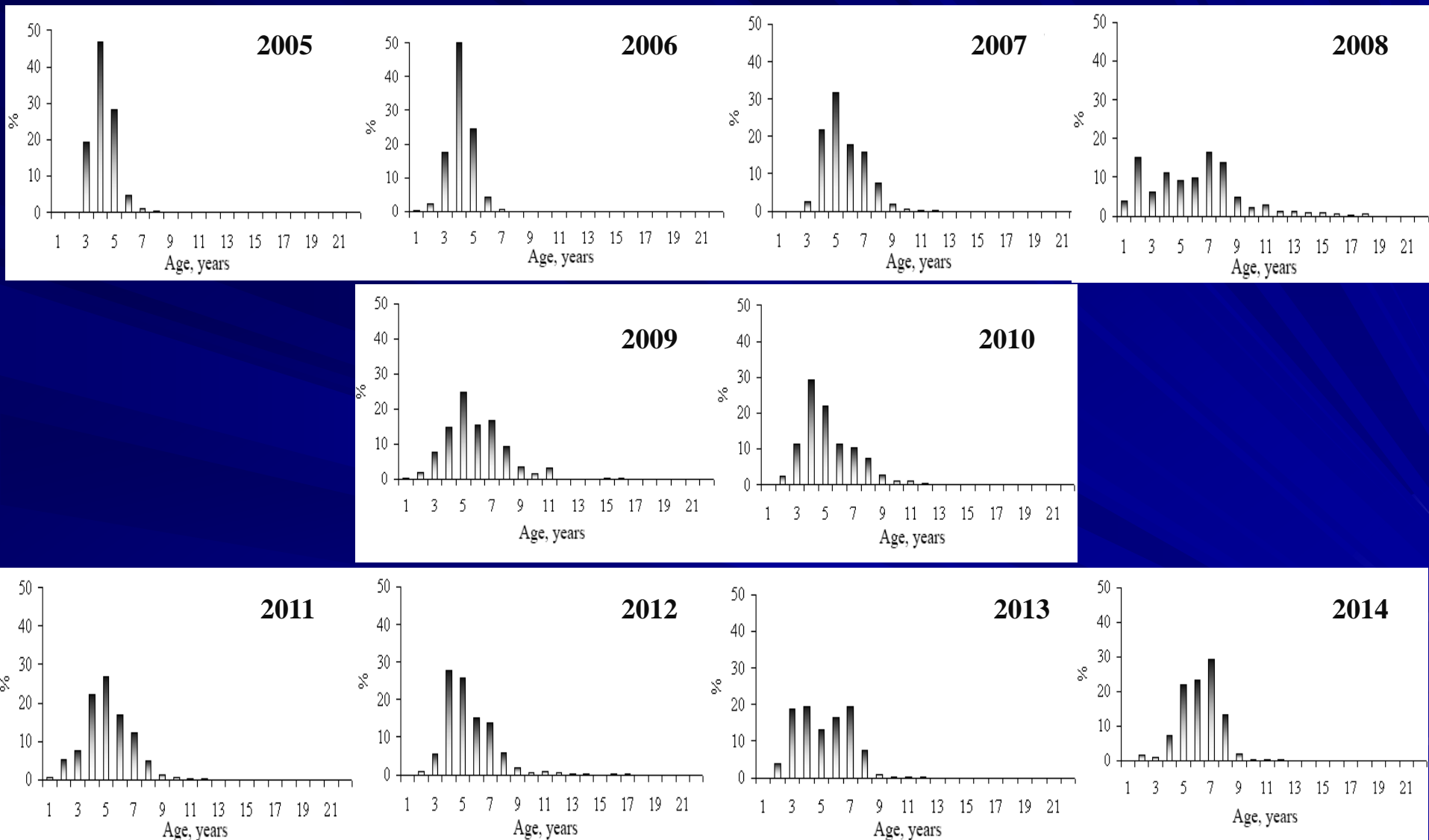
**The pollock CPUE of Russian factory trawlers in the Western Bering Sea zone
in 2000-2014**

Northern Bering Sea pollock



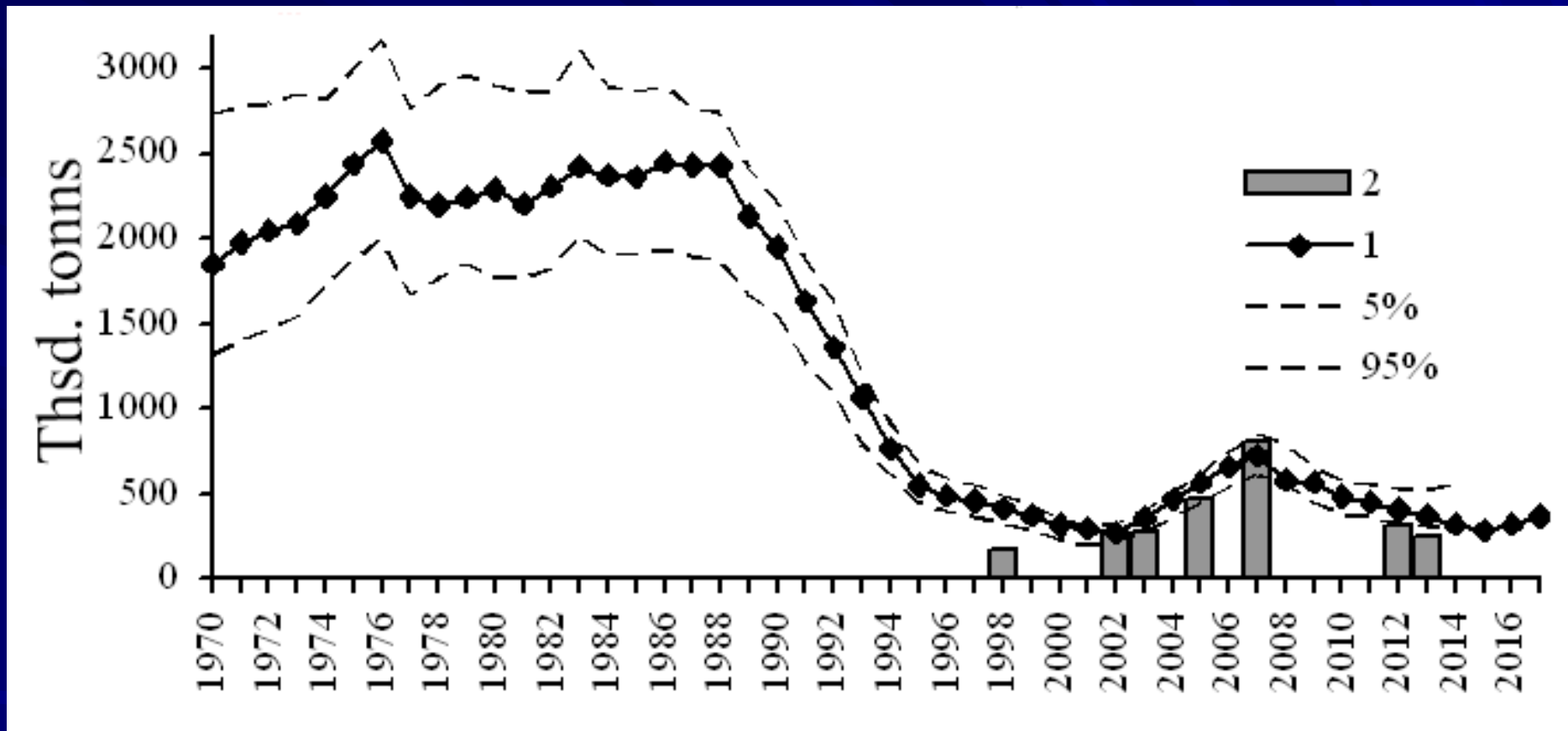
Forecast of Navarin pollock stock's condition

Karagin (Western Bering Sea) pollock



Age composition, 2005-2014

Karagin (Western Bering Sea) pollock



Total stock's biomass: 1 – according assessment, 2 - according data of the trawl surveys

TAC and catch for pollock by region, thsd. t

Year	Chukotka zone		Western Bering Sea zone		Karagin subzone	
	TAC	Catch	TAC	Catch	TAC	Catch
2010	7.7	4.0	338.1	315.5	48.6	43.4
2011	5.7	3.8	353.6	332.9	40	39.2
2012	5.3	4.4	410.8	385.6	33.2	26.3
2013	5.6	4.4	393.1	358.9	31.4	29.8
2014	5.3	3.4	393.0	330.6	16.1	15.1
2015	5.5	1.6*	430.0	161.0*	11.5	4.7*
2016	6.2		455.8		7.4	

Data through 21 July 2015