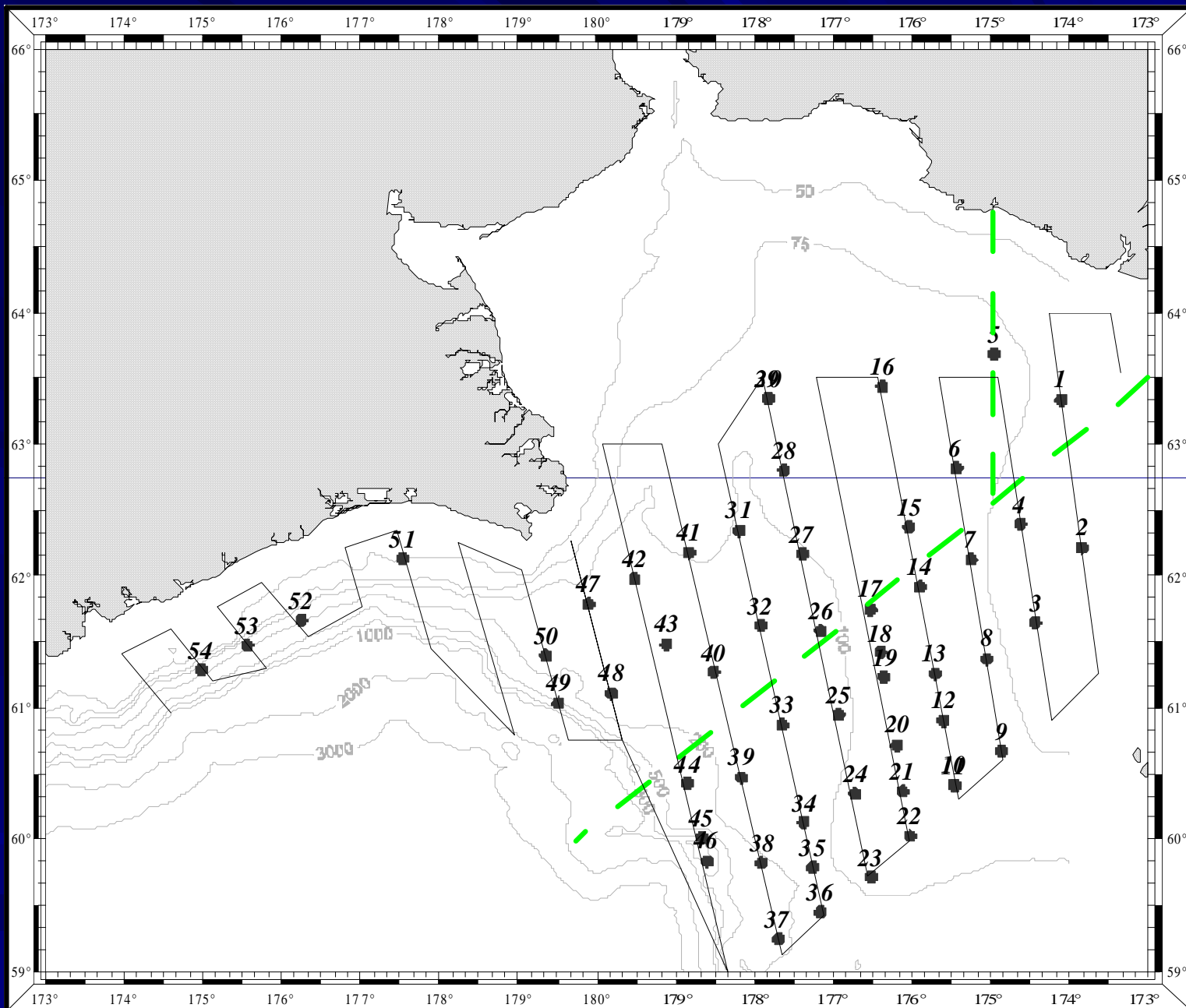


**19th THE SCIENTIFIC AND TECHNICAL COMMITTEE OF THE
PARTIES TO THE CONVENTION ON THE CONSERVATION AND
MANAGEMENT OF POLLOCK RESOURCES IN THE CENTRAL
BERING SEA**

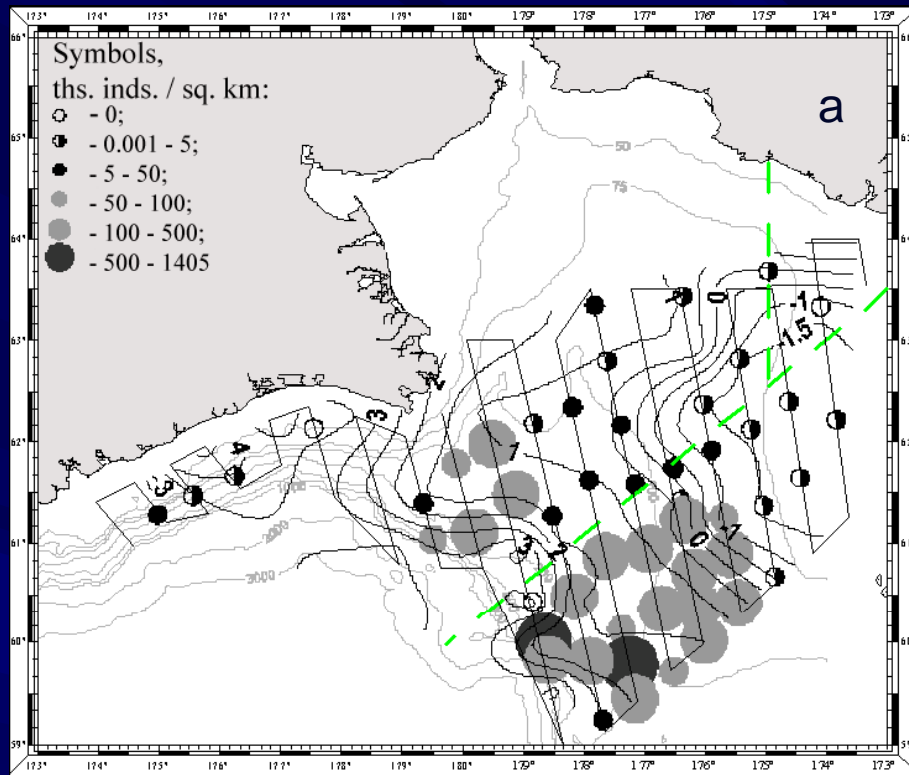
**Year 2013-2014 Research on the Status of Bering Sea Pollock
Stocks**

**Paper submitted
by
the Russian Federation**

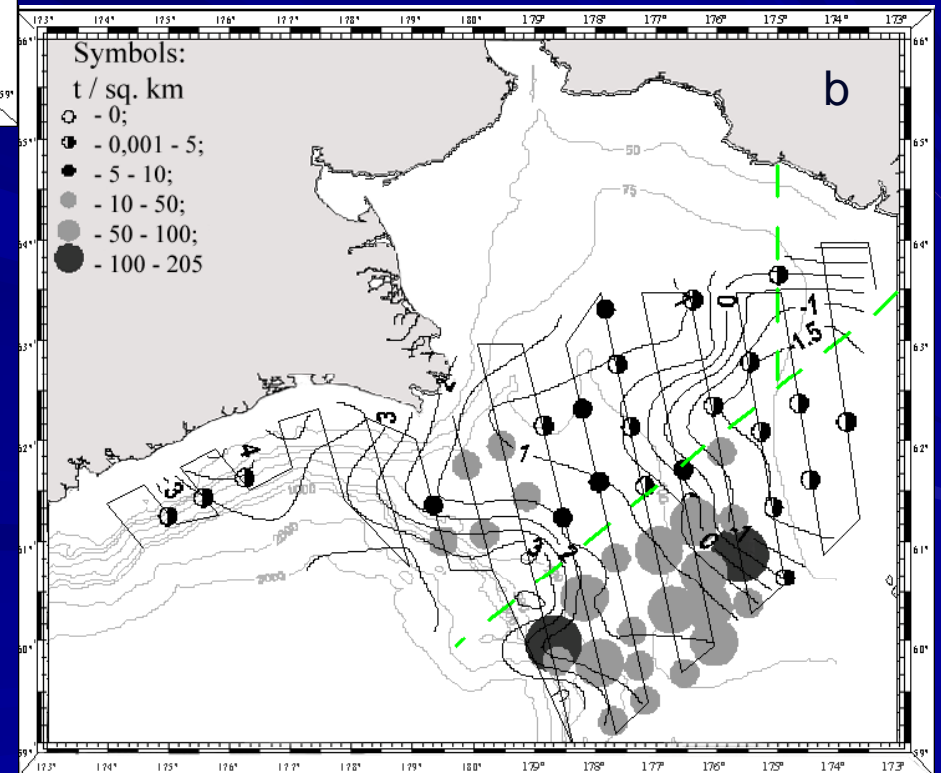
September 1-15, 2014

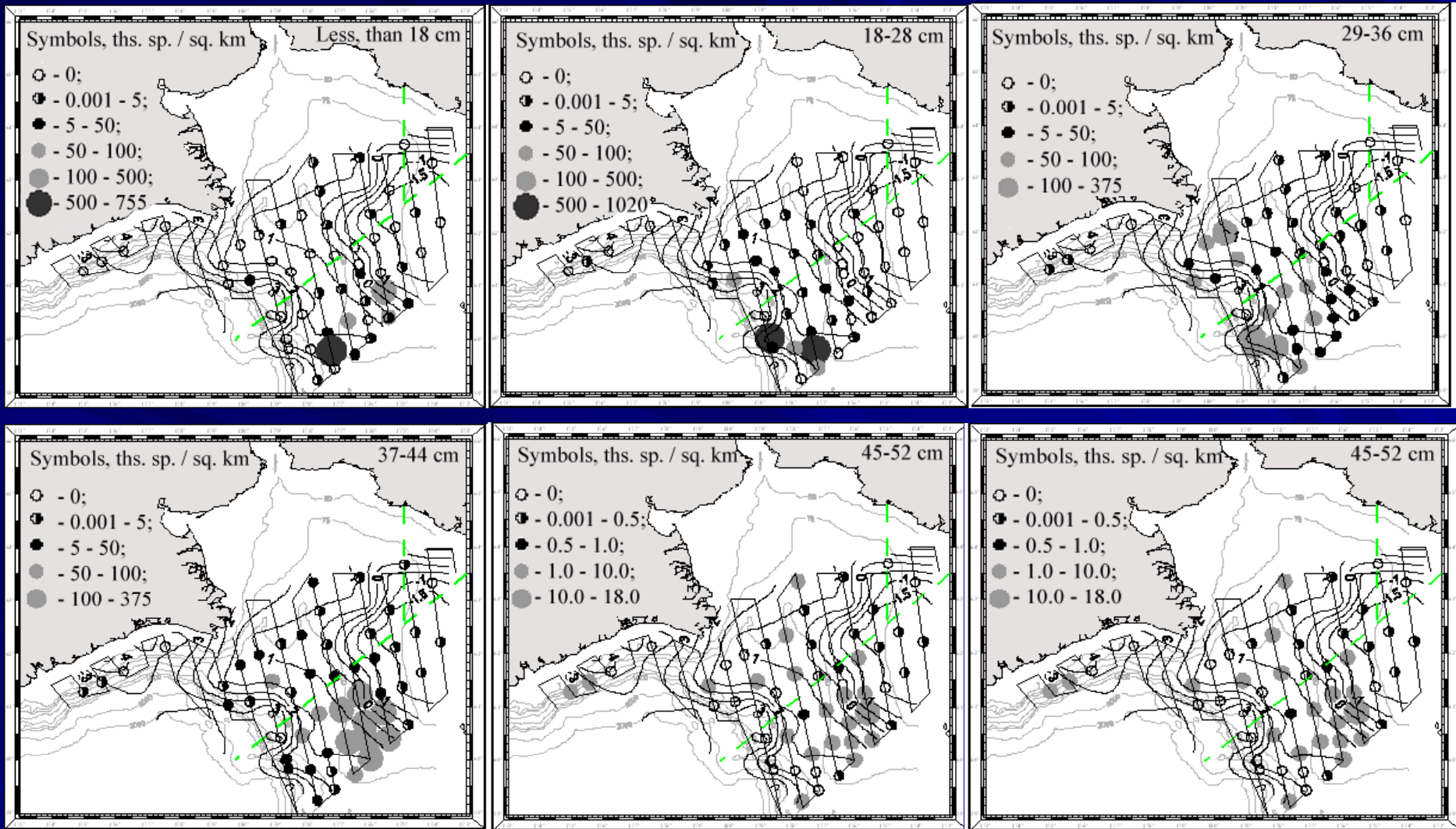


Haul and transects location during August 20 - September 9 EI MWT survey in the Northwestern Bering Sea, R/V TINRO, 2013

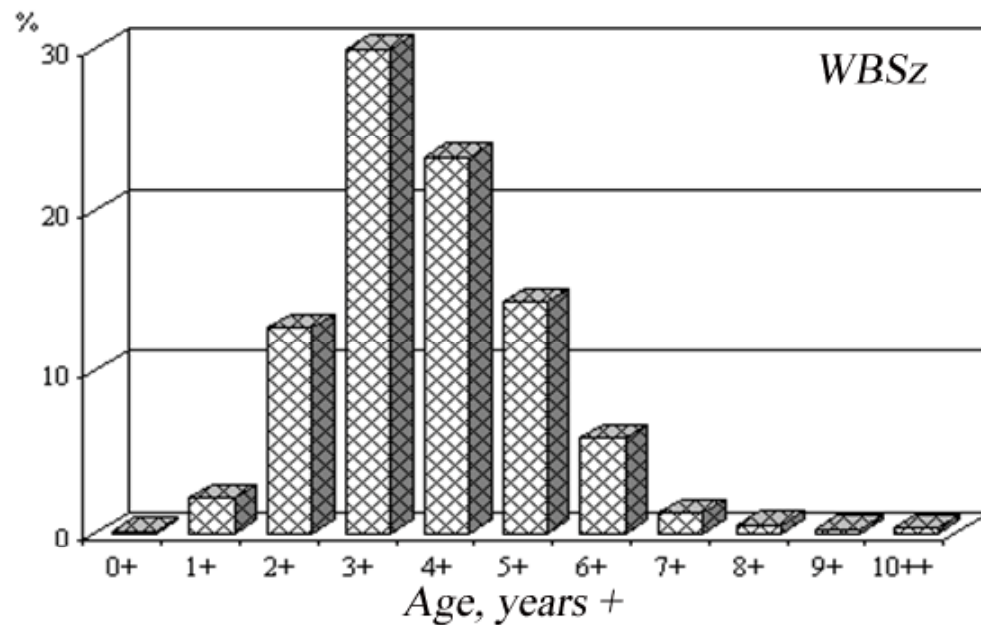


Pollock (size more 17 cm)
density distribution in the
Northwestern Bering Sea,
August 20- September 9, 2013 (a
- sp/sq. km; b – mt/sq. km)

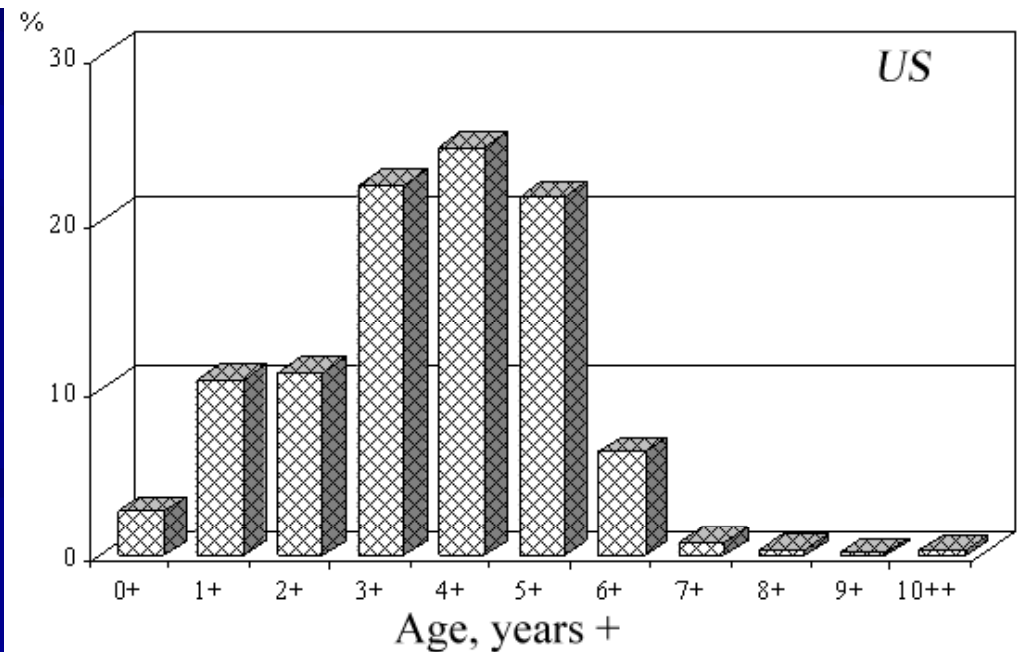




Pollock different size group density distribution in the northwestern Bering Sea, Aug 20- Sep 9, 2013 (sp/sq. km)



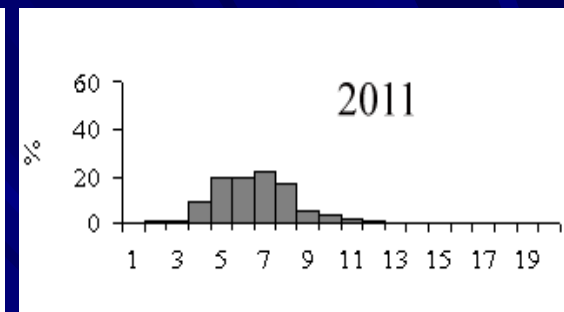
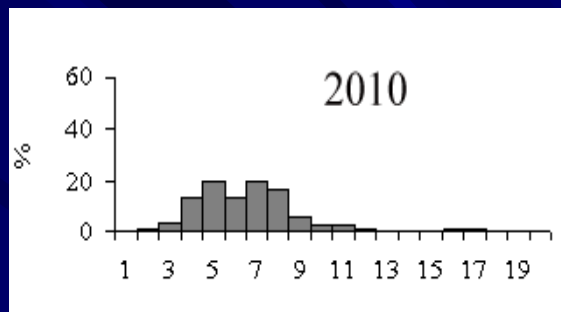
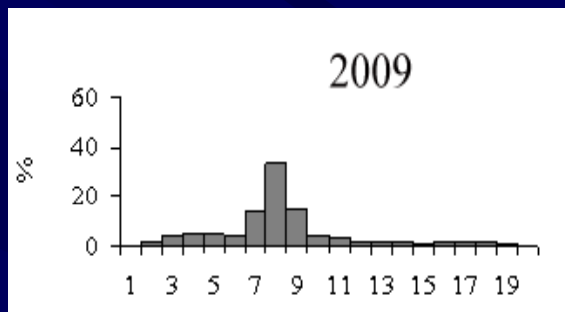
Pollock relative abundance
at age in the Northwestern
Bering Sea from the R/V
TINRO EI MWT survey in
August-September, 2013
(WBSz - Russian EEZ
to west 175°W; US - US EEZ
to north 59°N)



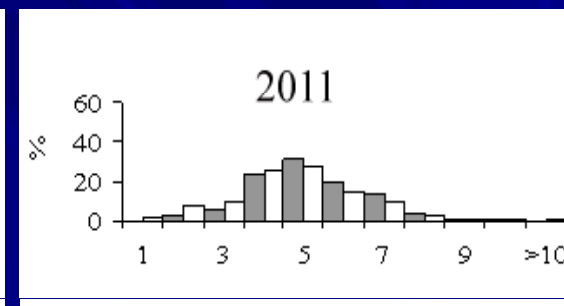
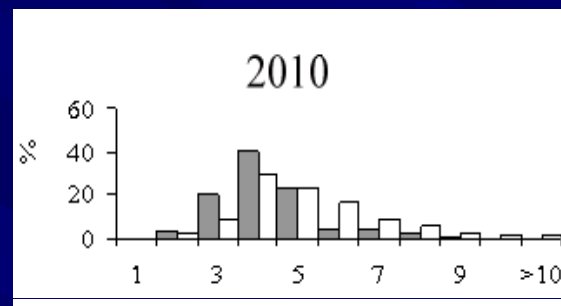
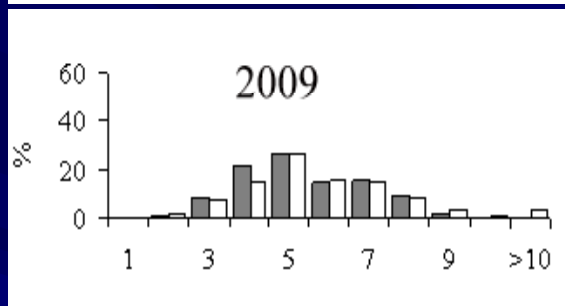
The pollock CPUE of Russian factory trawlers in the Western Bering Sea zone in 2000-2013

Year	2000	2001	2002	2003	2004	2005	2006	2007	2008	2009	2010	2011	2012	2013
Catch per fishing day, tonn	37,3	46,7	47,7	56,2	66,2	70,8	75,1	59,6	53,1	45,9	54,7	55,6	60,4	61,2

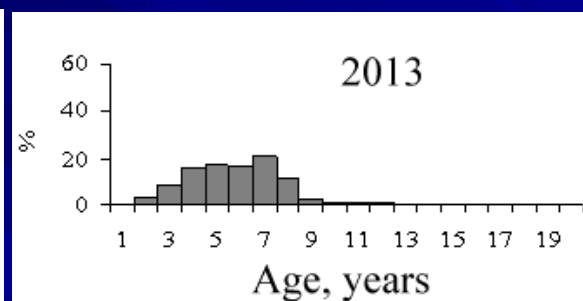
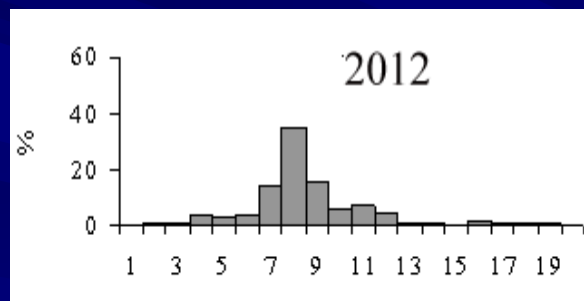
1



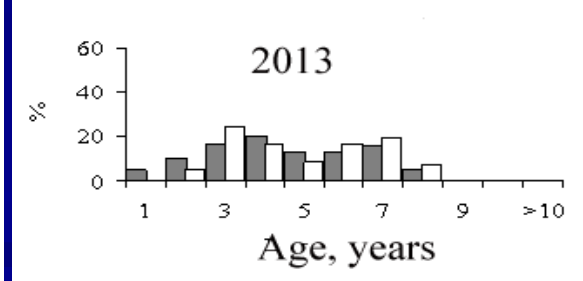
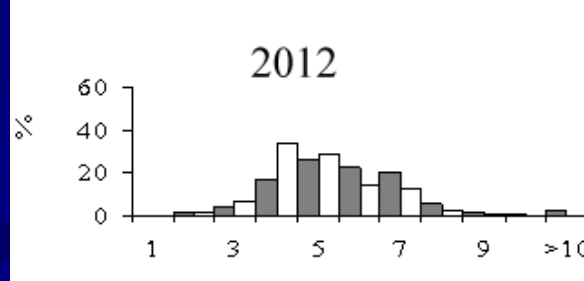
2



1

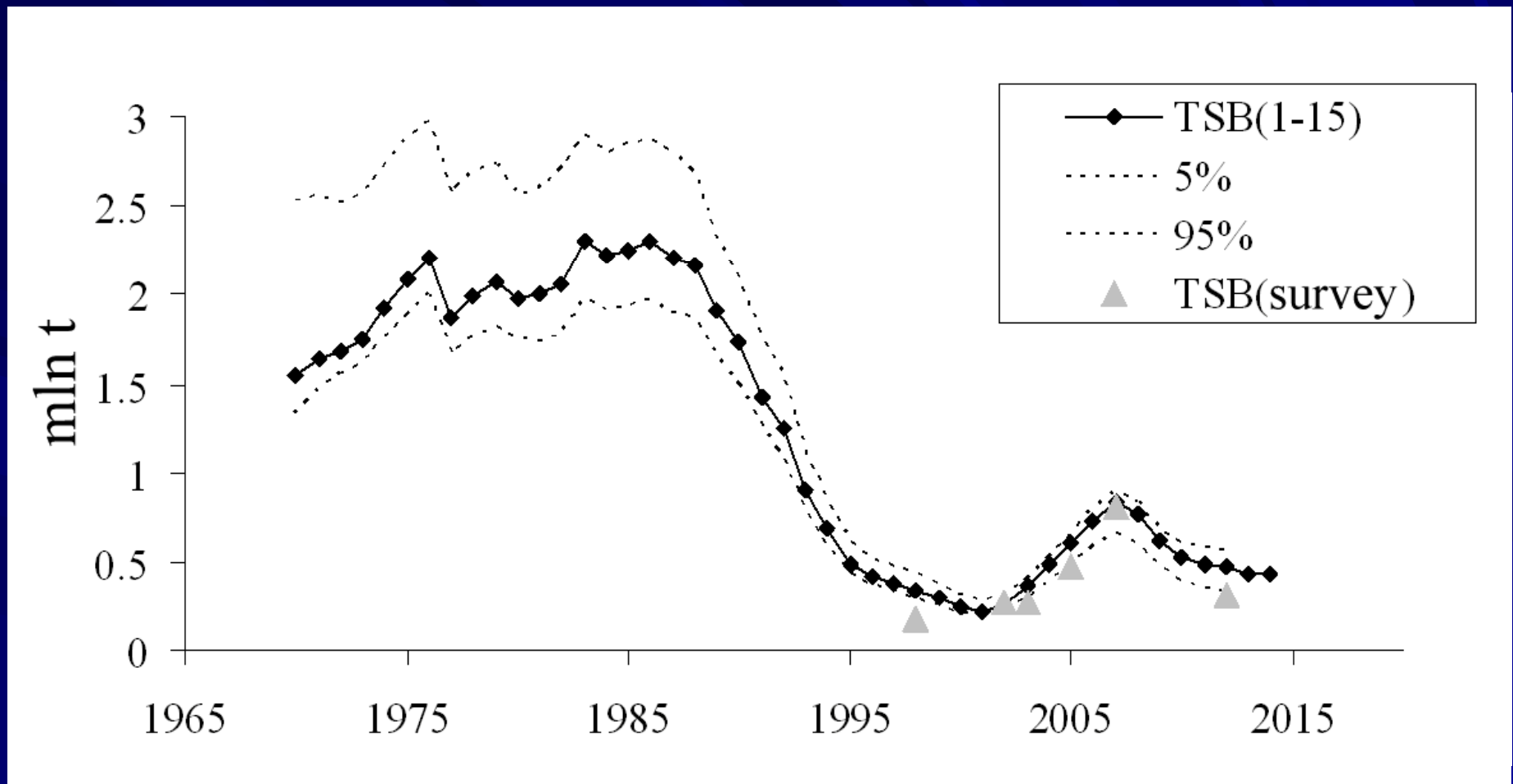


2



■ Karagin subarea □ WBSZ to the west of 174° E

Age structure of the Western Bering Sea pollock, caught by Danish seine (1) in the Karagin subarea and by trawl in the Western Bering Sea area to the West of 174° E and in the Karagin subarea (2)



Total stock biomass of the Western Bering Sea pollock and bootstrap distribution's percentile of its estimates in comparison with the trawl surveys' data

TAC and catch for pollock by region, ths. t

Year	Chukotka zone		Western Bering Sea zone		Karagin subzone	
	TAC	Catch	TAC	Catch	TAC	Catch
2010	7.7	4.0	338.1	315.5	48.6	43.4
2011	5.7	3.8	353.6	332.9	40	39.2
2012	5.3	4.4	410.8	385.6	33.2	26.3
2013	5.6	4.4	393.1	358.9	31.4	29.8
2014	5.3		393.0		16.1	
2015	5.5		430.0		11.5	



THANK YOU
FOR ATTENTION