



**Russian Bering sea
pollock studies in 2007-2008.**

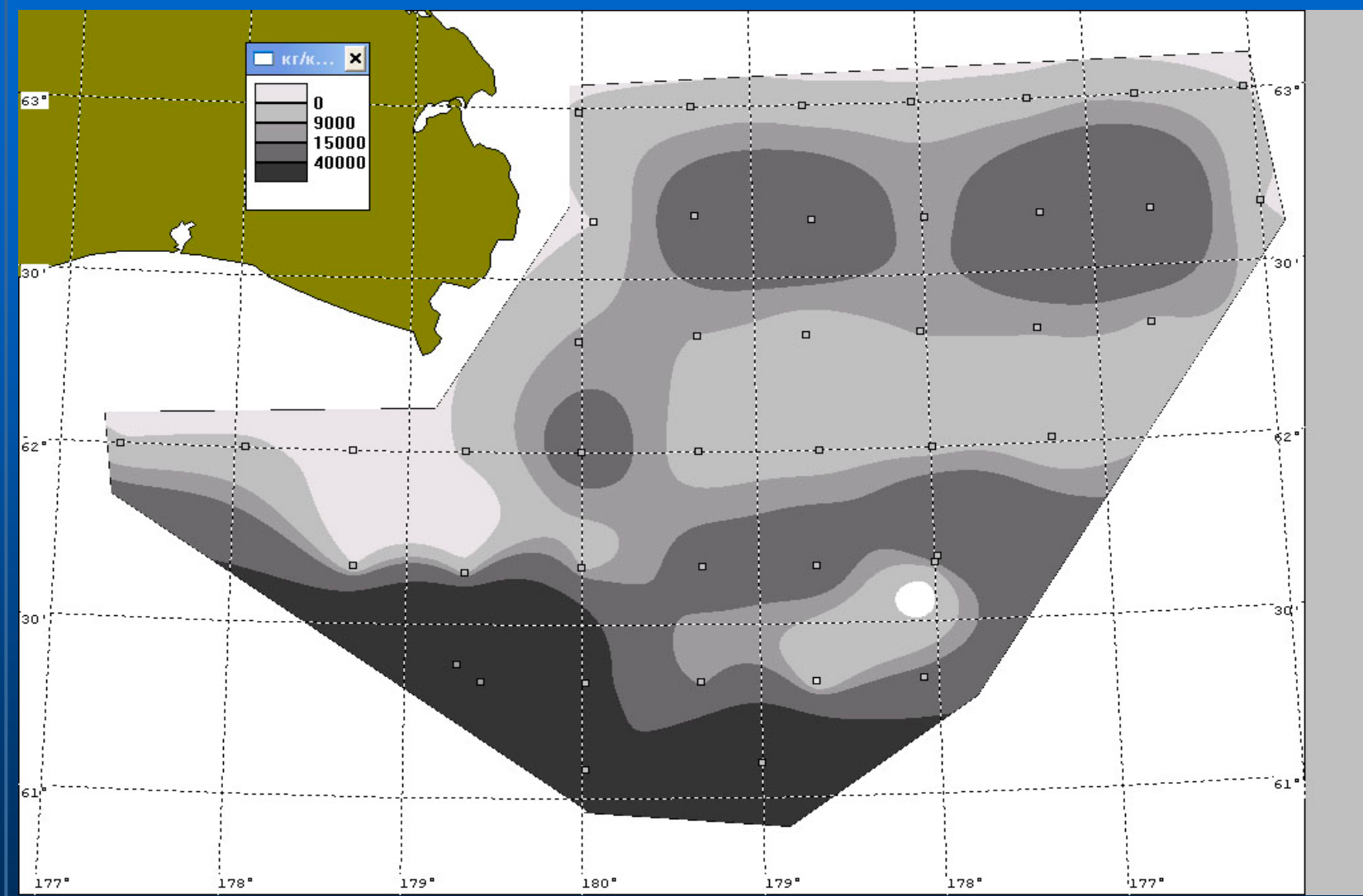
Russian pollock cruises in the Bering sea in VII 2007 – IX 2008.

Period of cruise	Month of survey	Region of survey	Institute
VIII-XI 2007	VIII	Navarin	VNIRO
IX-XI 2007	X	Navarin	VNIRO
VII, IX 2007	VII, IX	Koryak, Navarin	TINRO- center
VI-IX 2008	VI-VII, VIII	Karagin, Koryak	VNIRO
IX-XI 2008	IX (proposing)	Karagin, Navarin	VNIRO

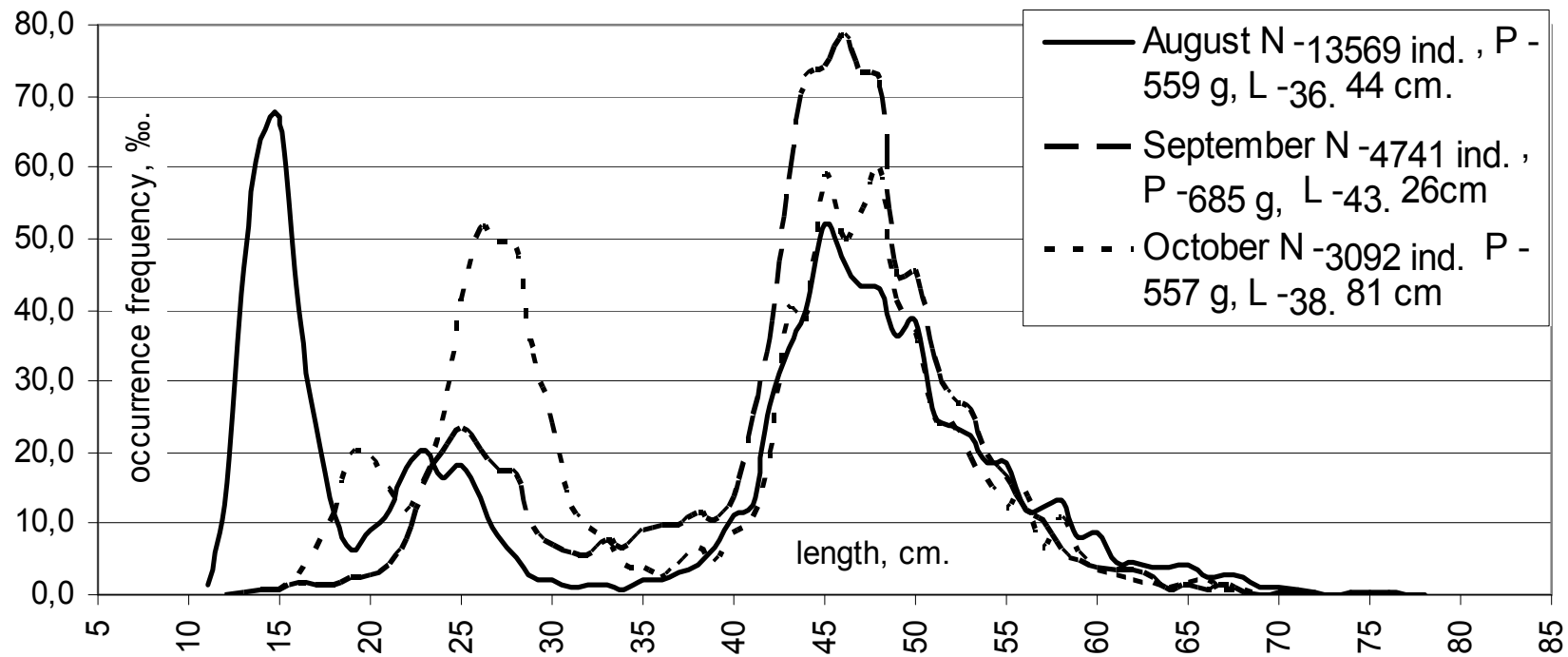
**Cruise aboard RTMK-S "Vasilyi Kalenov"
in the Northwestern Bering Sea
in August–November 2007.**



A.K.Lubomudrov
VNIRO



Pollock spatial distribution in Navarin area in August 2007.



Pollock length composition in the Northwestern Bering sea.

Biological characteristics of the Northwestern Bering Sea pollock in August 2007.

average length, cm/number		36.44/13569
mode, cm		15, 23-25, 45
average weight, g		560
prevailed maturity stages of gonads, %	female	II-III – 60.0; III – 23.2; VI-II – 16.8
	male	II-III – 53.8; III – 30.8; VI-II – 15.4
prevailed food objects, %		calan-38.9; euph-26.6; shrimps – 12.9; pollock – 10.1
morphophysiological characteristic of juveniles fish		
cubic condition index		0.588
GSI, %	females	0.75
	males	0.72
HSI, %	female	8.70
	males	9.02
morphophysiological characteristic of adult fish		
cubic condition index		0.599
GSI, %	female	2.13
	males	1.71
HSI, %	female	8.74
	males	7.83
number		300

Biological characteristics of Northwestern Bering sea pollock in September 2007.

average length, cm/number		43.26/4741
mode, cm		25, 46
average weight, g		685
prevailed maturity stages of gonads, %	females	II-III – 29.2; III – 57.3; VI-II – 8.0
	males	II-III – 25.0; III – 68.0; VI-II – 7.0
prevailed food objects, %		euph- 43.5; shrimp – 16.6; calan – 13.6; hyper -11.1; poll – 4.9
morphophysiological characteristic of juvenile fish		
cubic condition index		0.613
GSI, %	females	0.63
	males	0.37
HSI, %	females	9.83
	males	9.14
morphophysiological characteristic of adult fish		
cubic condition index		0.612
GSI, %	females	3.28
	males	2.30
HSI, %	females	9.29
	males	8.95
number		600

Biological characteristics of Northwestern Bering sea pollock in October 2007.

average length, cm/number		38.81/3092
mode, cm		26, 45-48
average weight, g		0.557
prevailed maturity stages of gonads, %	female	II-III – 17.2; III – 75.8.
	male	II-III – 20.4; III – 67.3.
prevailed food objects,%		euph-55.4; calan-15.6; hyper-13.2; shrimp-4.9; pollock-2.5
morphological characteristic of juvenile fish		
cubic condition index		0.629
GSI, %	females	0.47
	males	0.27
HSI, %	females	11.00
	males	10.16
morphological characteristic of adult fish		
cubic condition index		0.625
GSI, %	females	3.28
	males	3.24
HSI, %	females	10.30
	males	9.50
number		470

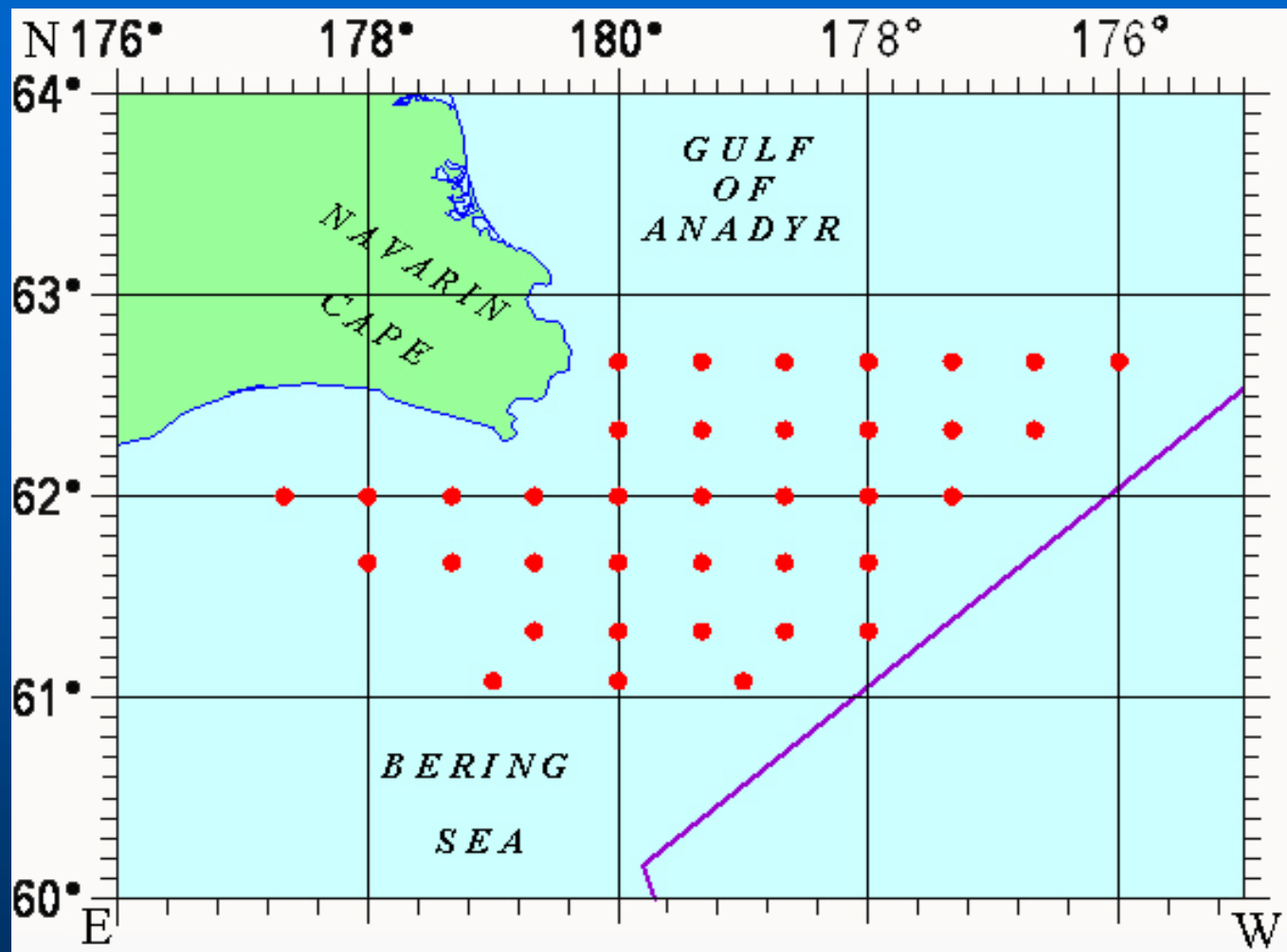
Biological characteristics of Navarin pollock generations 2004-2006 years in August 2007.

generation		2004	2005	2006
average length, cm/number		26.43/696	22.05/1110	14.71/3611
mode, cm		25-26	23	15
average weight, g	females	140.6	61.8	27.1
	males	149.0	66.0	22.0
prevailed maturity stages of gonads, %	females	II – 93.0	I-II - 50; II - 38	I - 100
	males	II – 88.0	I-II - 53; II - 29	I - 100
prevailed food objects, %		calanus - 54.7; euph - 31.3	calanus - 42.3; euph - 38.5	calanus - 58.1; euph - 38.7
cubic condition index		0.603	0.581	0.550
GSI, %	females	0.61	0.63	0.21
	males	0.97	-	-
HSI, %	females	10.36	8.92	8.89
	males	9.73	8.80	9.45
number		54	25	26

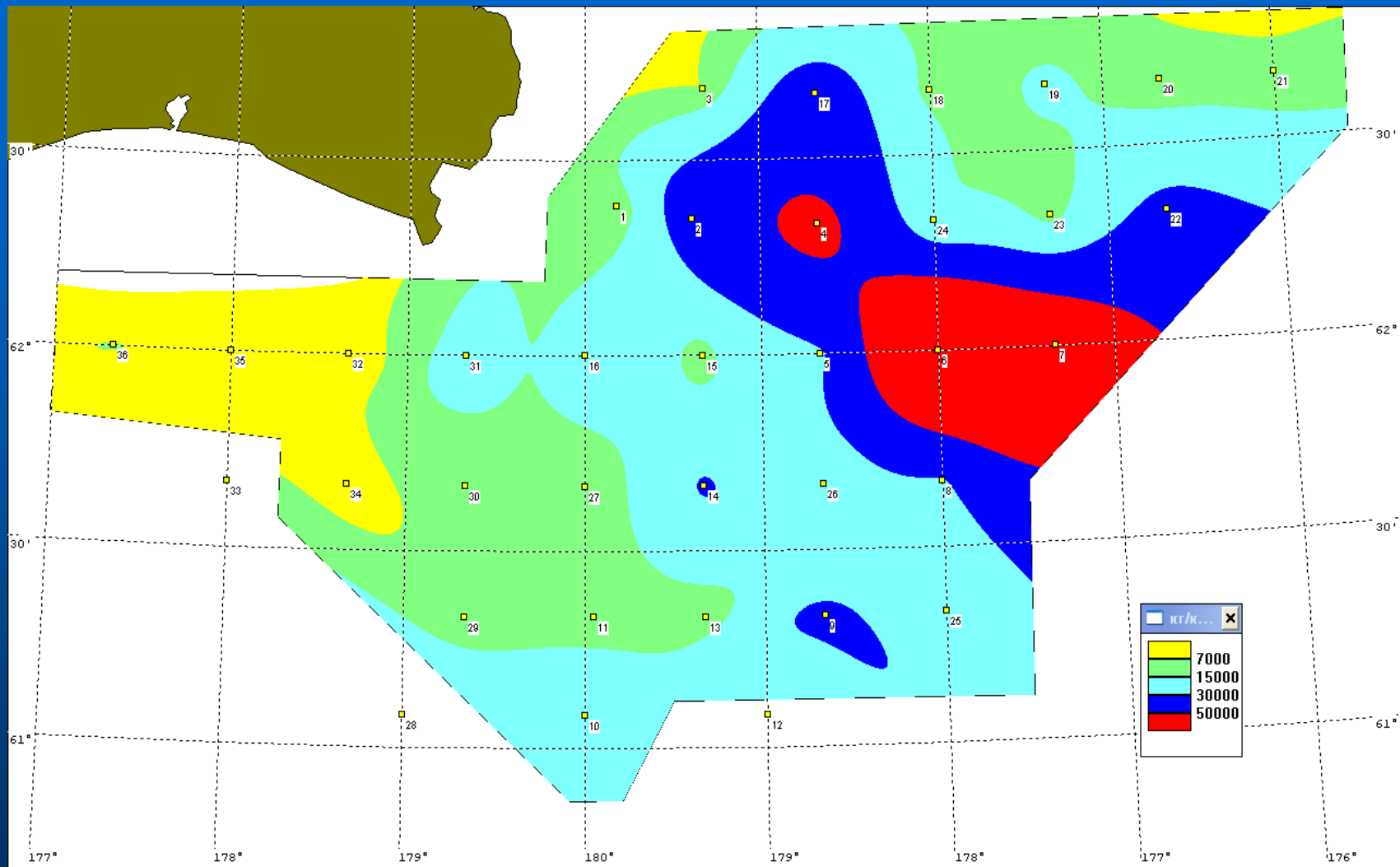
Cruise aboard SRTM "Lebedevo" to the Northwestern Bering Sea in September-November 2007



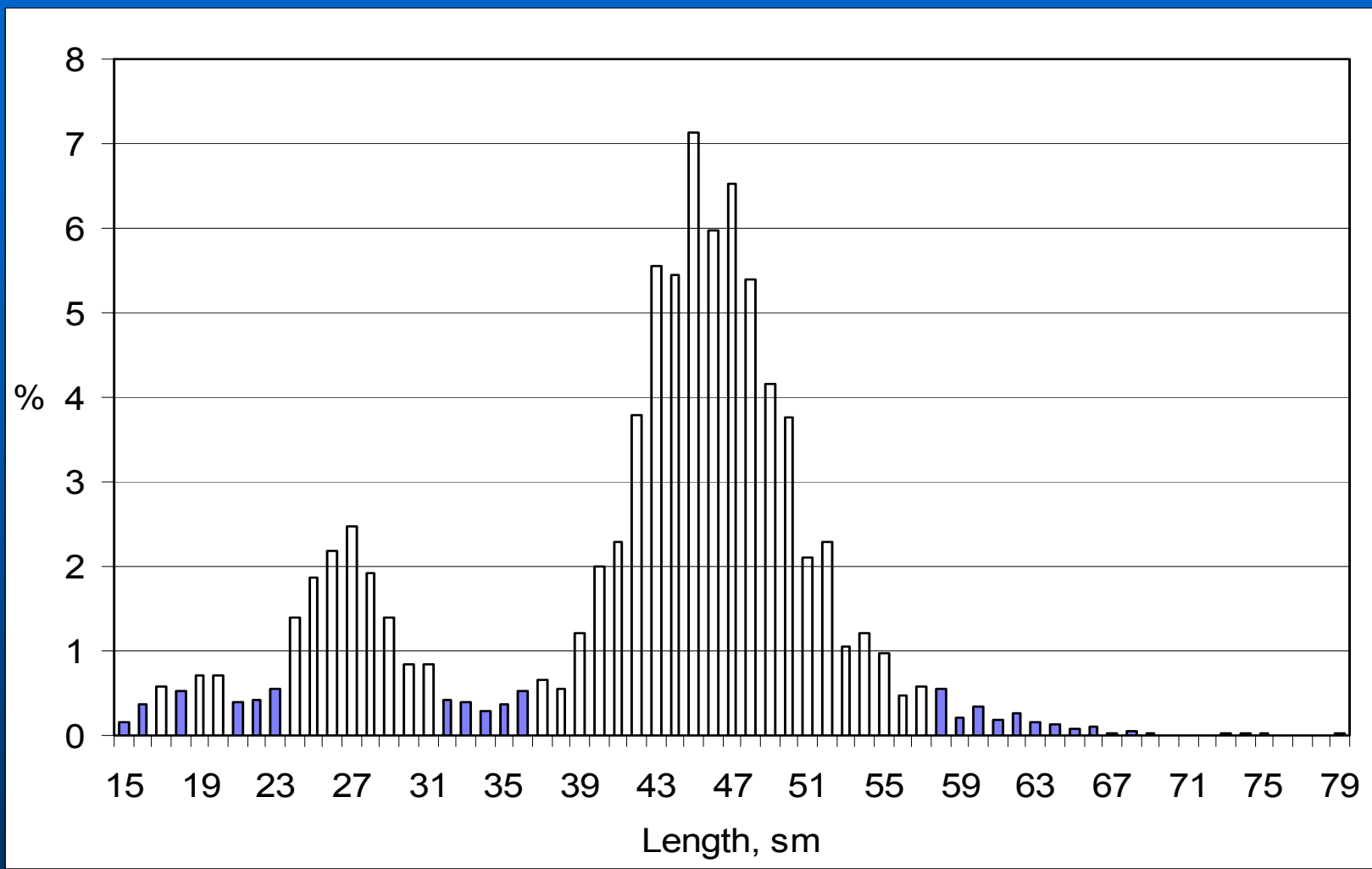
A.V. Khodakov
VNIRO



Scheme of trawl survey of SRTM "Lebedevo" in Navarin area in October 2007.



Pollock spatial distribution in Navarin area in October 2007.



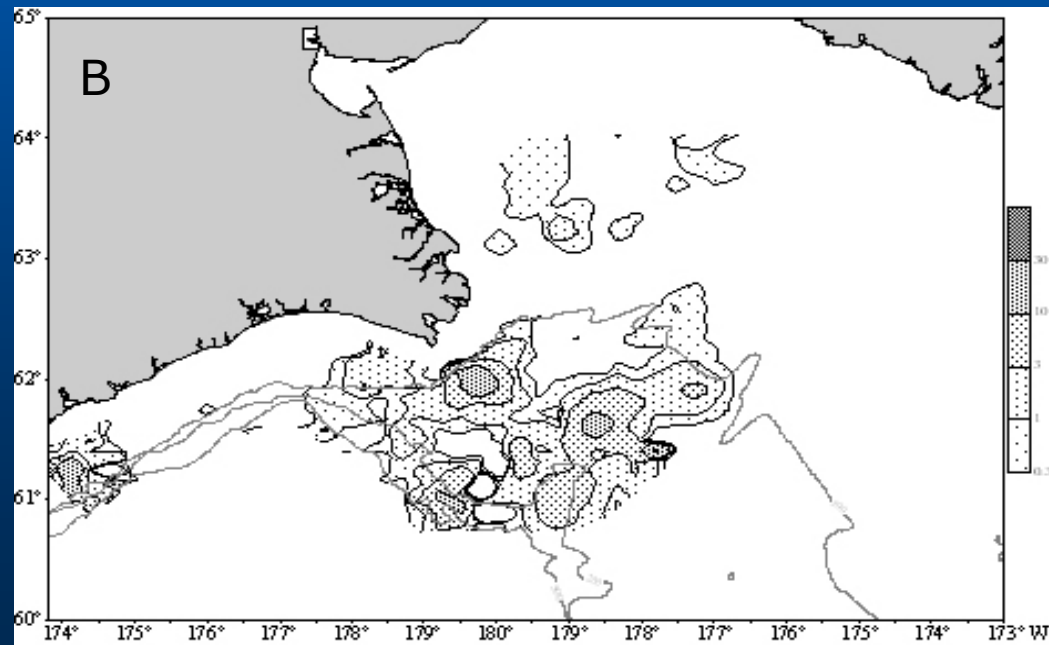
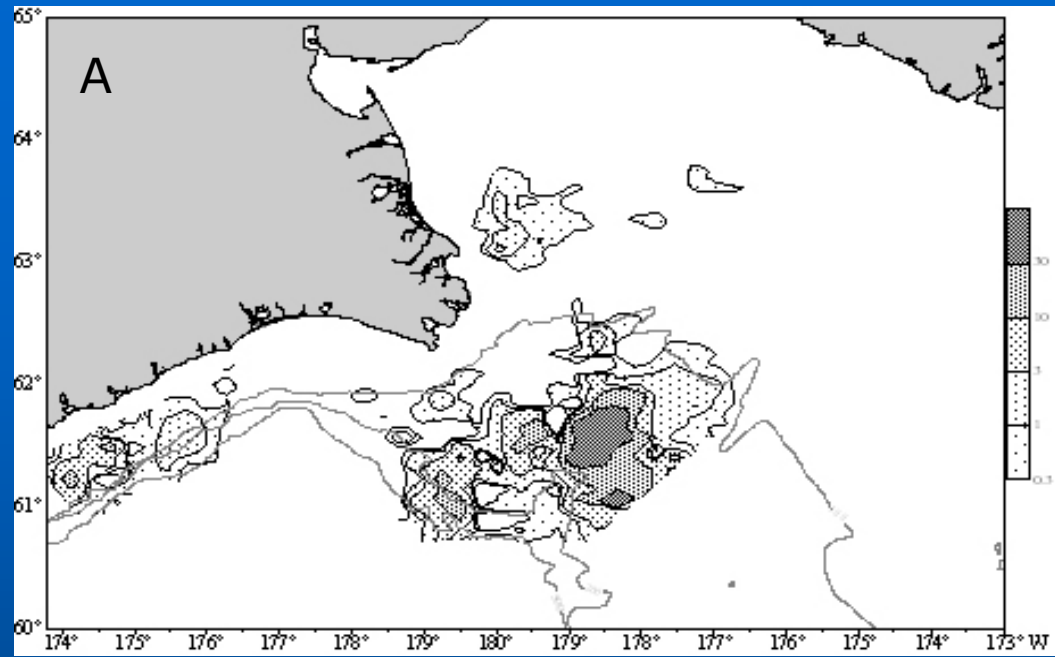
Pollock length composition in Navarin area in October 2007.

**Echo integration-trawl pollock survey aboard R/V "TINRO"
in the Northwestern Bering Sea in
July, September 2007.**



A.V. Nikolayev, E. Syrovatkin, M.A. Stepanenko

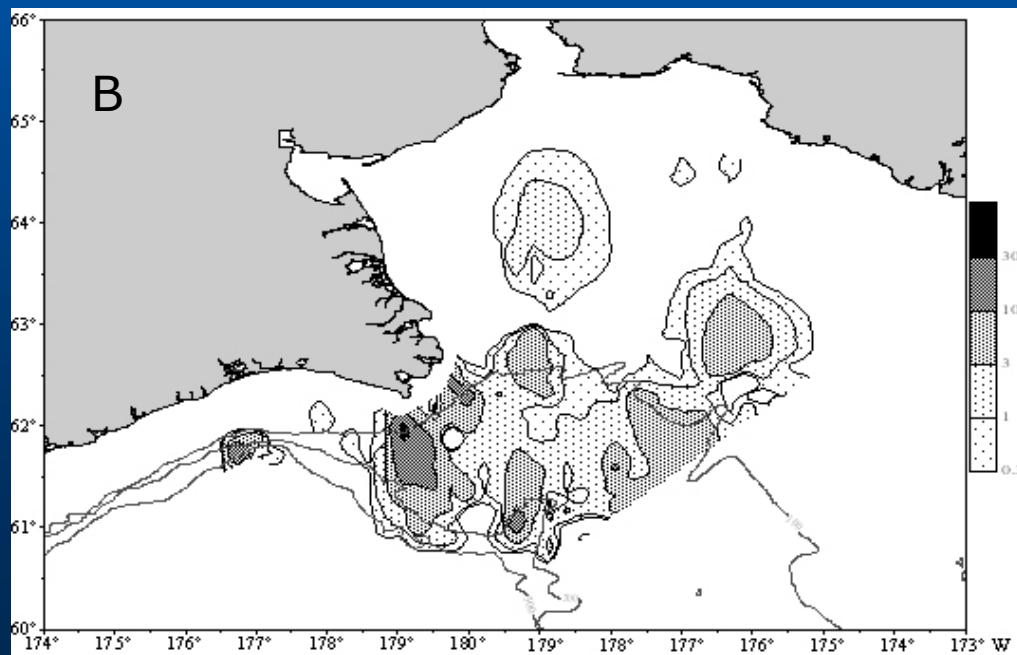
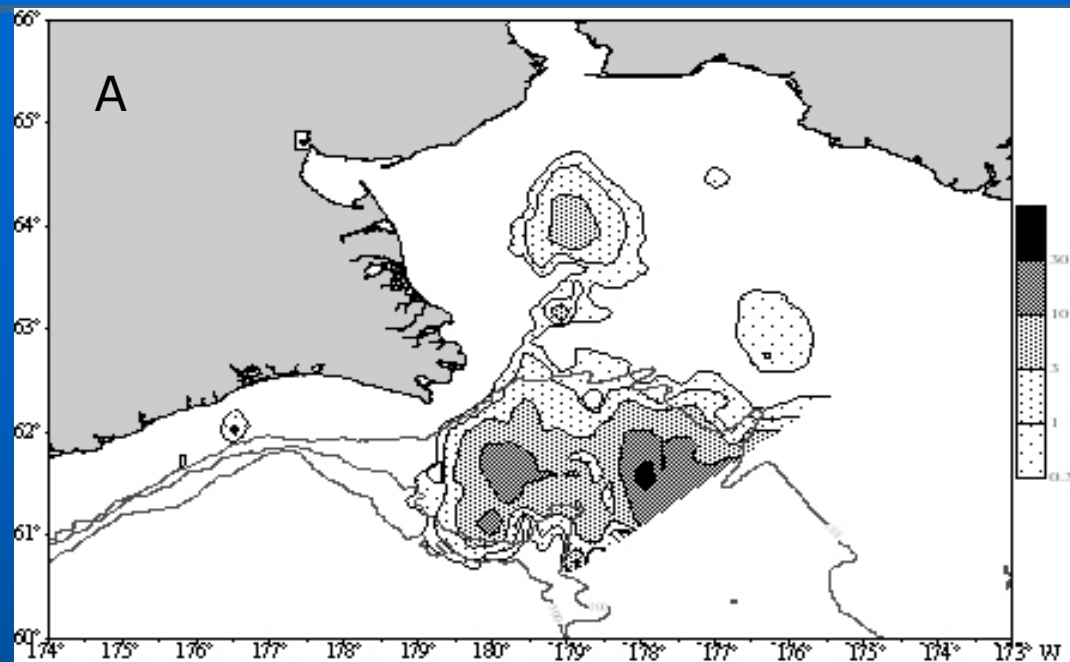
TINRO-Centre



**Pollock biomass
distribution (mt/mile²)
in the Northwestern
Bering Sea, July 2007.**

A - in midwater (surface -
10 m off bottom)

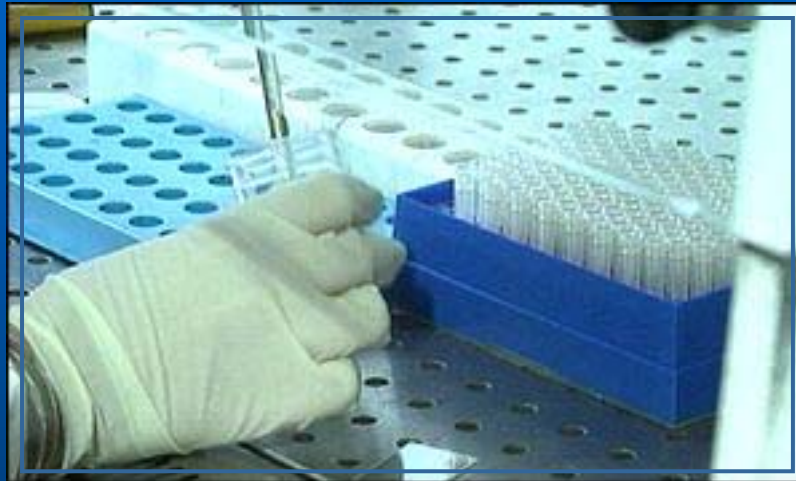
B - off bottom (bottom - 10
m of bottom)



**Pollock biomass
distribution (mt/mile²)
in the Northwestern
Bering Sea, September 2007.**

A - in midwater (surface - 10 m off
bottom)
B - off bottom (bottom - 10 m of
bottom)

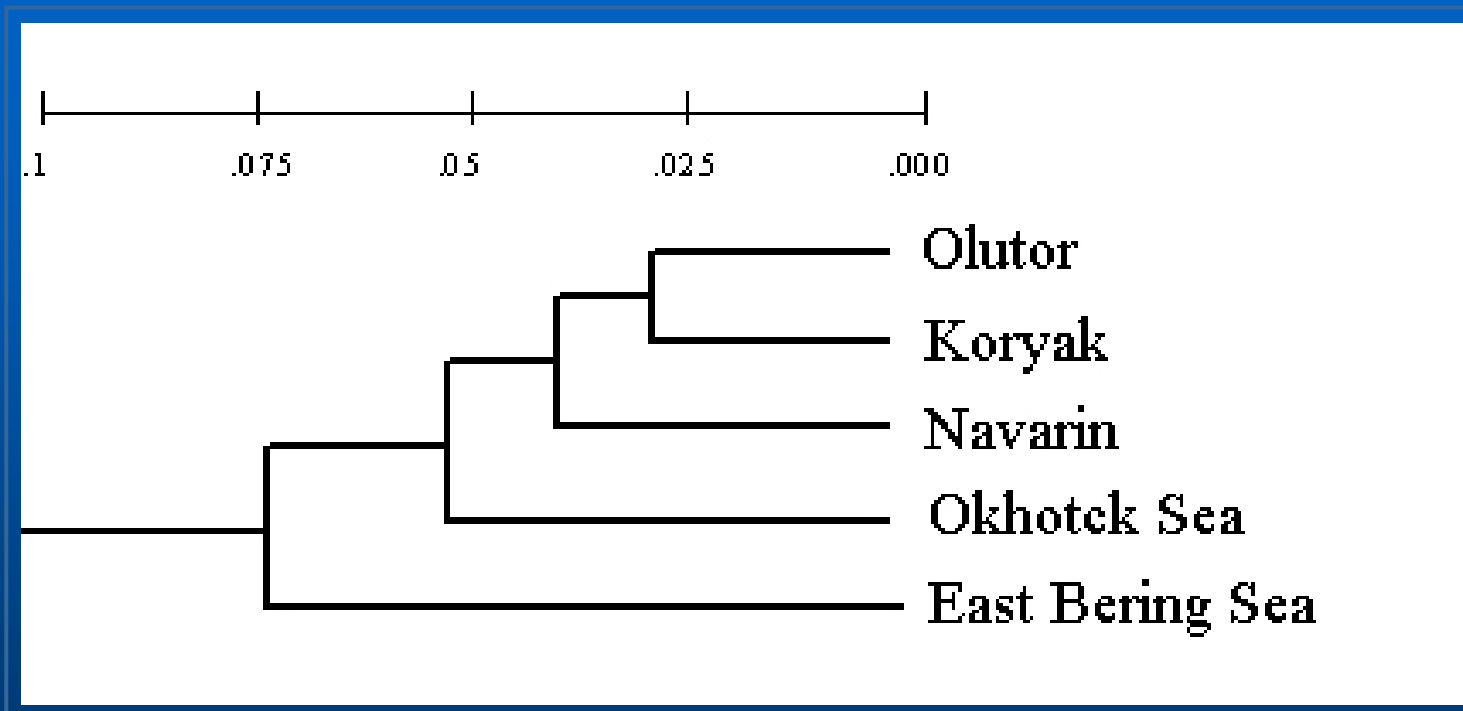
Genetic studies 2007-2008.



E.A.Shubina¹, A.I.Glubokov², E.V.Ponomareva¹

¹ Belozerskyi Research Institute of Physical-Chemical Biology of Moscow State University

² VNIRO



UPGMA cluster of pollock's samples based on Nei distances.

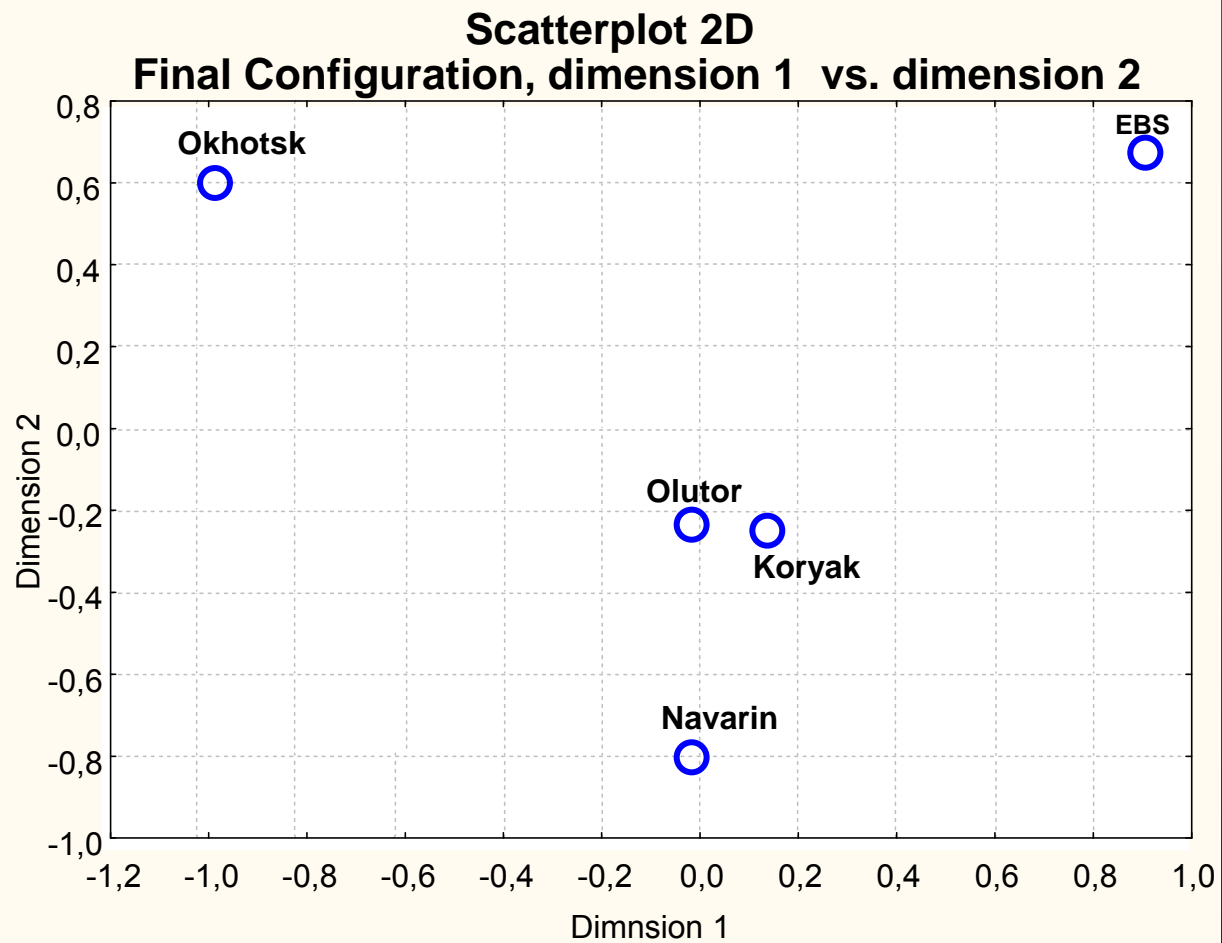


Diagram of dispersion of pollock's samples on plane.

**Thank you
for your attention**