

**Measures Adopted Pursuant to the Convention
on the Conservation and Management of Pollock Resources
in the Central Bering Sea
Trial Fishing for Pollock in 2006**

September 8, 2005

1. *Taking into account the report of the Scientific and Technical Committee on the status of Pollock resources in the Aleutian Basin, the 10th Annual Conference decided, as follows:*
 - 1.1 *To establish the 2006 Allowable Harvest Level (AHL) at Zero; and*
 - 1.2 *To authorize trial fishing in the Convention Area.*
2. *No more than 2 vessels from each Party to the Convention at any time may conduct trial fishing for pollock in the Convention Area. **However, the Republic of Korea is authorized to seek the trial fishing rights of two vessels from other Parties for two months for 2006.** Information on the vessels that will engage in the trial fishing will be provided to all parties at least two weeks prior to commencement of trial fishing. Such information will include vessel name, vessel type, vessels' international radio call sign (IRCS), vessel's satellite transmitter number, and the area and time of the trial fishing. Parties conducting trial fishing will notify the other Parties regarding the schedule of such trial fishing with sufficient notice to facilitate the embarkation and disembarkation of observers. Vessels engaged in trial fishing will have scientific observers of the flag-State on board and will accept at least one Scientific Observer of other Parties to the Convention, with the cost being paid by the requesting Party in accordance with arrangements to be made between the flag State of the vessel and the other Parties. All provisions of the Convention and all measures adopted by the annual conference regarding boarding and inspections, vessel monitoring systems, entry and transshipment notifications, safe boarding ladder standards, and shipboard logs and records will govern such trial fishing. Prior to the **11th** Annual Conference, Parties conducting trial fishing will submit to the other Parties a report of the trial fishing which provides the type of catch and distribution data as specified in the Central Bering Sea Observer Program Manual.”*

Korea's Trial Fishing Plan for 2006

1. The Purposes of Trial Fishing

- To analyze the geographical distribution of Pollock in the Central Bering Sea.
- To estimate total weight and number of fish of Pollock and other species
- To collect biological data of Pollock and other species (length, sex, body weight, maturity)

2. Fishing Company

Name of Company	Address	Tel/Fax
Keukdong Fisheries Co.,Ltd	45, Okeum-Dong, SongPa-Ku, Seoul, Korea	82+2+3402+0919 / 82+2+3402+0966
Nambuk Fisheries Co.,Ltd	654, Nambumin-Dong, Seo-Ku, Busan, Korea	82+51+467+1551 / 82+51+243+4211
HanSung Enterprise Co.,Ltd	71, Daekyo-Dong 1Ga, YoungDo-Ku, Busan, Korea	82+51+410+7100 / 82+2+732+5300
Oyang Corporation	76-3, Taepyung-Ro 1Ga, Joong-Ku, Seoul, Korea	82+2+3277+1600 / 82+2+313+8079

3. Descriptions of Trial Fishing Vessel

3-1. Keukdong Fisheries Co.,Ltd

Name of Vessel	Type	G/T	Call Sign
CLOVER Ho	Stern Trawler	997.02	6.S.W.N
Main Dimension			INMARSAT-C No.
Length	Breadth	Depth	
63.18	11.40	5.10	

3-2. Nambuk Fisheries Co.,Ltd

Name of Vessel	Type	G/T	Call Sign
Nambuk Ho	Stern Trawler	5,549.02	6.M.X.T
Main Dimension			INMARSAT-C No.
Length	Breadth	Depth	
104.30	17.80	11.00	

3-3. Han Sung Enterprise Co.,Ltd

Name of Vessel	Type	G/T	Call Sign
Joon Sung Ho	Stern Trawler	2,866	6.L.S.U
Main Dimension			INMARSAT-C No.
Length	Breadth	Depth	
84.91	15.00	9.55	444095484

3-4. Oyang Corporation

Name of Vessel	Type	G/T	Call Sign
2 Oyang Ho	Stern Trawler	3,527.33	6.M.M.E
Main Dimension			INMARSAT-C No.
Length	Breadth	Depth	
88.94	15.00	9.80	444047612

4. Time of Trial Fishing Operation

Trial Fishing will occur from 1 July 2006 to 31 August 2006

The schedule of trial fishing in detail will be notified to the Parties two weeks prior to the beginning of trial fishing.

5. Cruise tracklines and survey method

Cruise tracklines will cover the Convention Area (Figure 1). Vessels engaged in trial fishing will observe conservation measures adopted by the Convention.

Vessels will be equipped with fish finders. The four vessels will detect fish schools in parallel, moving along the tracklines at the average speed of 7~8kt and about 5-mile in width. Fishing will be conducted with a large mid-water trawl net when fish schools are detected.

6. Observer

One observer from Korea will be on board each vessel. One observer from other parties will be welcome on board in accordance with the terms and conditions on trial fishing on Pollock in 2006. Cost for observer should be paid by the requesting party.

7. Report

The results of trial fishing will be submitted to the next Scientific and Technical Committee, and the Annual Conference, and to the other Parties. This will include the type of catch and distribution data as specified in the Central Bering Sea Observer Program Manual.

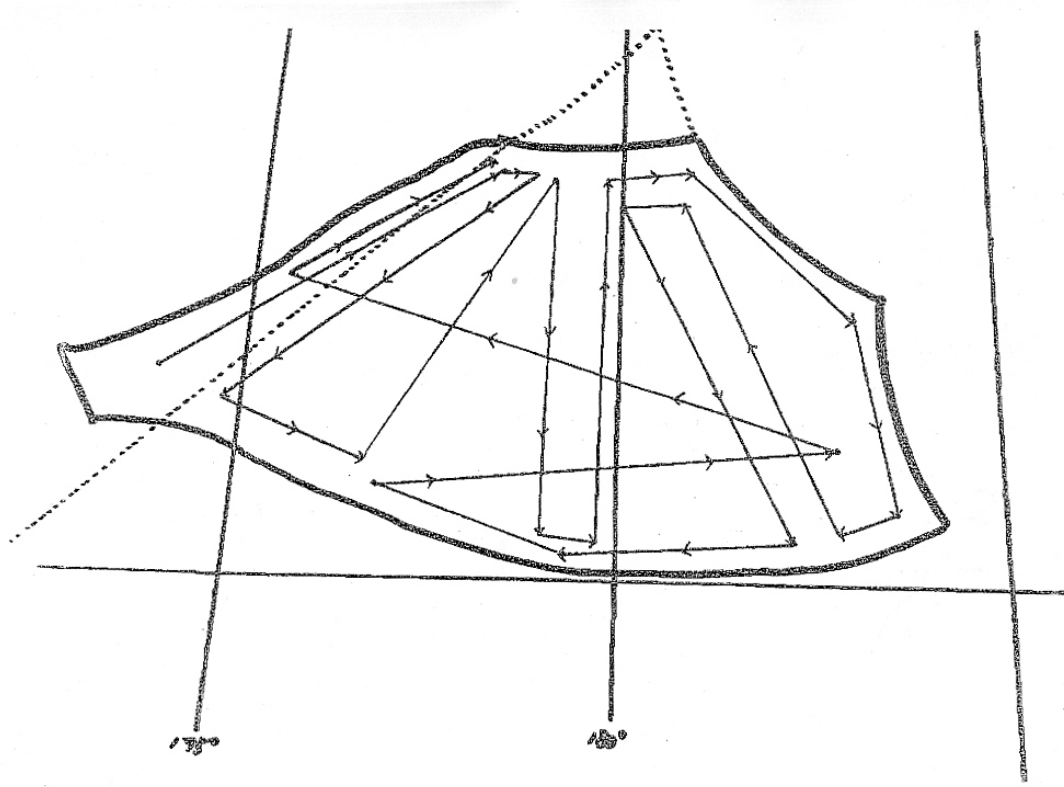


Figure 1. Trackline for Korean Trial Fishing in 2006.